

VOR ECS 108.2	APP CRS 323°	Rwy Idg TDZE Apt Elev	5310 4176 4176
-------------------------	------------------------	-----------------------------	---

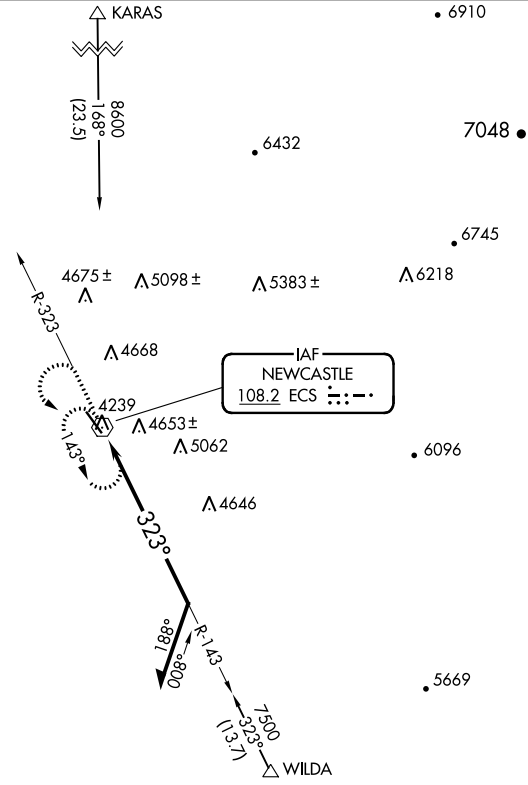
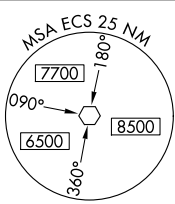
VOR RWY 32

MONDELL FLD (ECS)

⚠ When Newcastle altimeter setting not received, procedure NA. Circling NA northeast of Rwy 14-32.

ODALS MISSED APPROACH: Climb to 6700 on ECS VOR R-323 then climbing left turn to 7500 direct ECS VOR and hold, continue climb-in-hold to 7500.

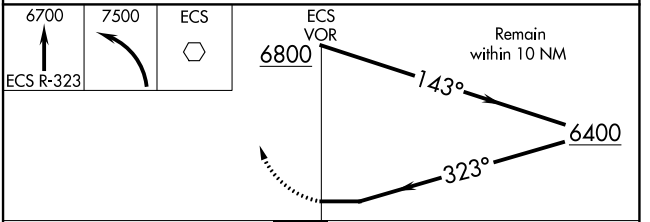
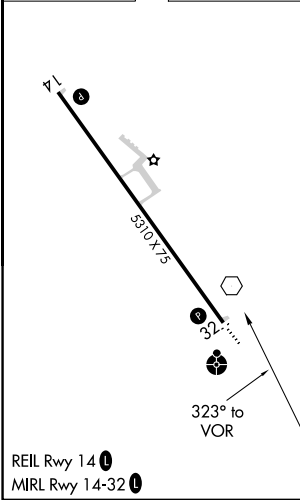
AWOS-3PT 118.0	DENVER CENTER 127.95 338.2	UNICOM 122.8 (CTAF) 0
--------------------------	--------------------------------------	---------------------------------



NW-1, 31 OCT 2024 to 28 NOV 2024

NW-1, 31 OCT 2024 to 28 NOV 2024

ELEV 4176	TDZE 4176
-----------	-----------



CATEGORY	A	B	C	D
S-32	4980-3/4 804 (900-3/4)	4980-1 804 (900-1)	4980-2 1/2	804 (900-2 1/2)
<input checked="" type="checkbox"/> CIRCLING	4980-1 804 (900-1)	4980-1 1/4 804 (900-1 1/4)	4980-2 1/2 804 (900-2 1/2)	5000-2 3/4 824 (900-2 3/4)