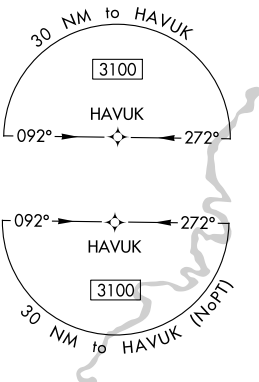
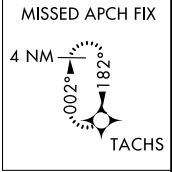
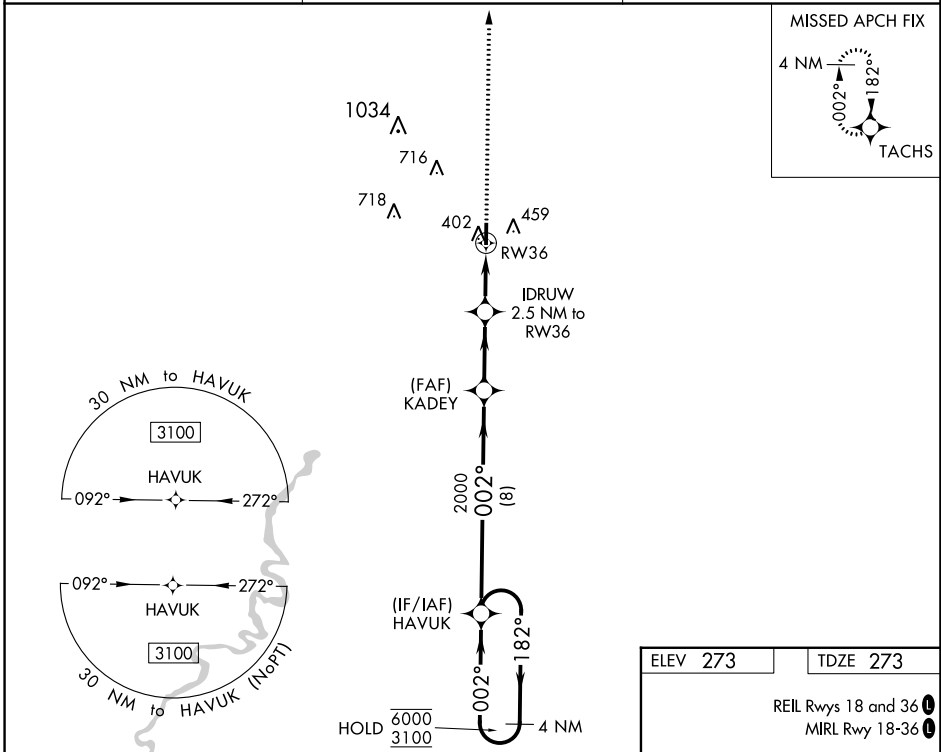


WAAS CH <b>56342</b> <b>W36A</b>	APP CRS <b>002°</b>	Rwy Idg <b>4000</b> TDZE <b>273</b> Apt Elev <b>273</b>
--	------------------------	---

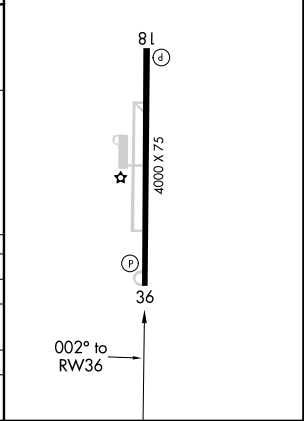
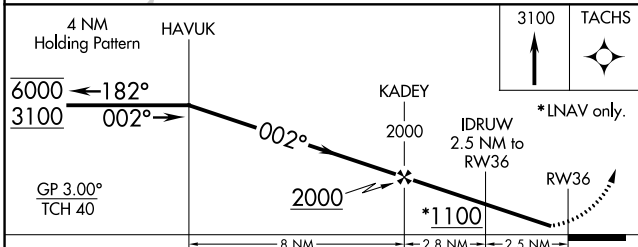
# RNAV (GPS) RWY 36

POCAHONTAS MUNI (M7)

RNP APCH. ▼ ▲ Rwy 36 helicopter visibility reduction below ¼ SM NA. Baro-VNAV NA. Use Walnut Ridge altimeter setting.		MISSED APPROACH: Climb to 3100 direct TACHS and hold.
ARG AWOS-3PT <b>126.525</b>	MEMPHIS CENTER <b>120.075 289.4</b>	UNICOM <b>122.8 (CTAF)</b>



ELEV 273	TDZE 273
REIL Rws 18 and 36	
MIRL Rwy 18-36	



CATEGORY	A	B	C	D
LPV DA	541-1 268 (300-1)			
LNAV/VNAV DA	583-1 310 (400-1)			
LNAV MDA	680-1 407 (500-1)		680-1½ 407 (600-1½)	
CIRCLING	900-1 627 (700-1)		1100-2½ 827 (900-2½) / 1100-2¾ 827 (900-2¾)	

SC-1, 31 OCT 2024 to 28 NOV 2024

SC-1, 31 OCT 2024 to 28 NOV 2024