

LOC/DME I-EVO <b>111.55</b> Chan <b>52 (Y)</b>	APP CRS <b>001°</b>	Rwy Idg TDZE <b>401</b> Apt Elev <b>402</b>	<b>6000</b>
--	------------------------	---	-------------

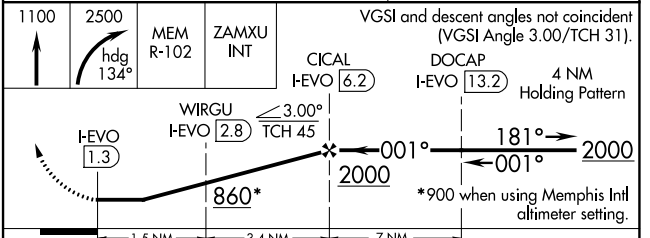
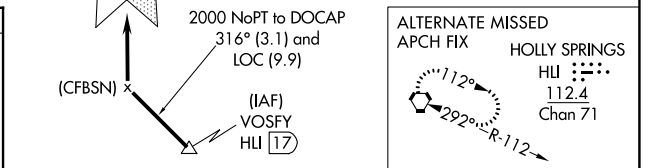
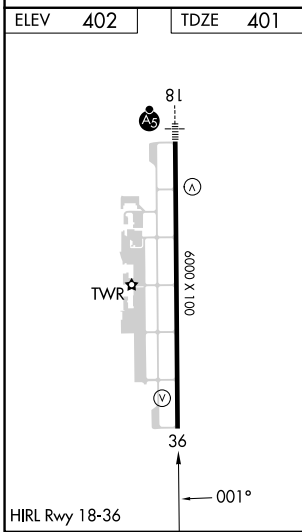
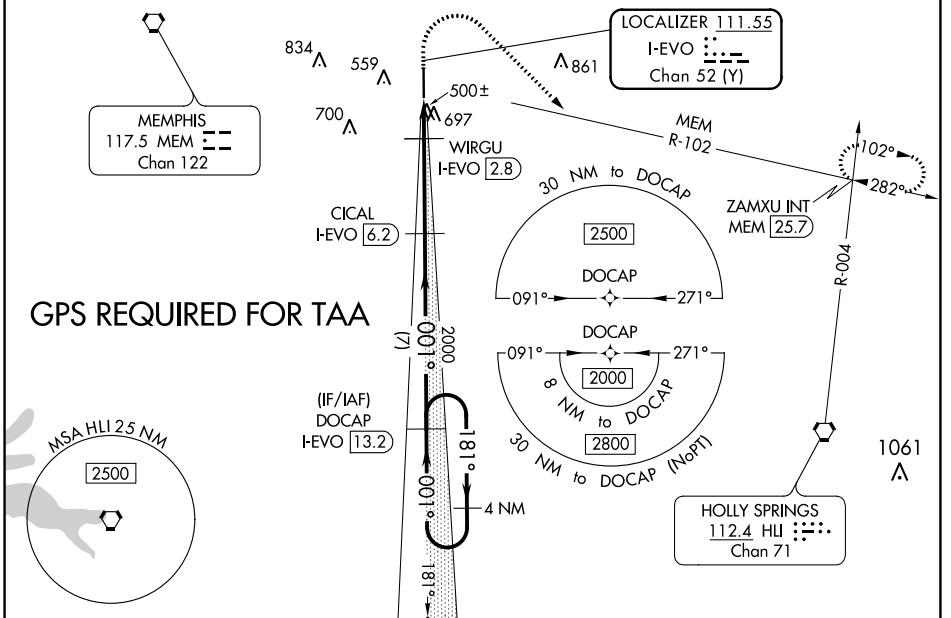
# LOC RWY 36

OLIVE BRANCH/TAYLOR FLD (OLV)

**▼** When local altimeter setting not received, use Memphis Intl altimeter setting and increase all MDA 40 feet; increase S-LOC 36 Cats C and D visibility 1/8 mile and Circling Cats C and D visibility 1/4 mile.  
**▲** Rwy 36 helicopter visibility reduction below 3/4 SM NA. DME required.

MISSED APPROACH: Climb to 1100 then climbing right turn to 2500 on heading 134° and MEM VORTAC R-102 to ZAMXU INT/MEM 25.7 DME and hold.

ATIS <b>119.925</b>	MEMPHIS APP CON <b>125.8 338.3</b>	OLIVE BRANCH TOWER ★ <b>125.275 (CTAF) 0</b>	GND CON <b>121.2</b>	CLNC DEL <b>121.2</b>	CLNC DEL <b>121.3</b> (When twr closed)	UNICOM <b>122.95</b>
------------------------	---------------------------------------	---	-------------------------	--------------------------	---	-------------------------



CATEGORY	A	B	C	D
S-36	760-1 359 (400-1)			
<b>C</b> CIRCLING	1060-1 658 (700-1)	1060-1 <sup>3/4</sup> 658 (700-1 <sup>3/4</sup> )	1200-2 <sup>1/2</sup> 798 (800-2 <sup>1/2</sup> )	

SC-4, 31 OCT 2024 to 28 NOV 2024

SC-4, 31 OCT 2024 to 28 NOV 2024