

WAAS CH 97708 W09A	APP CRS 090°	Rwy Idg 4549 TDZE 669 Apt Elev 669
--	------------------------	---

RNAV (GPS) RWY 9

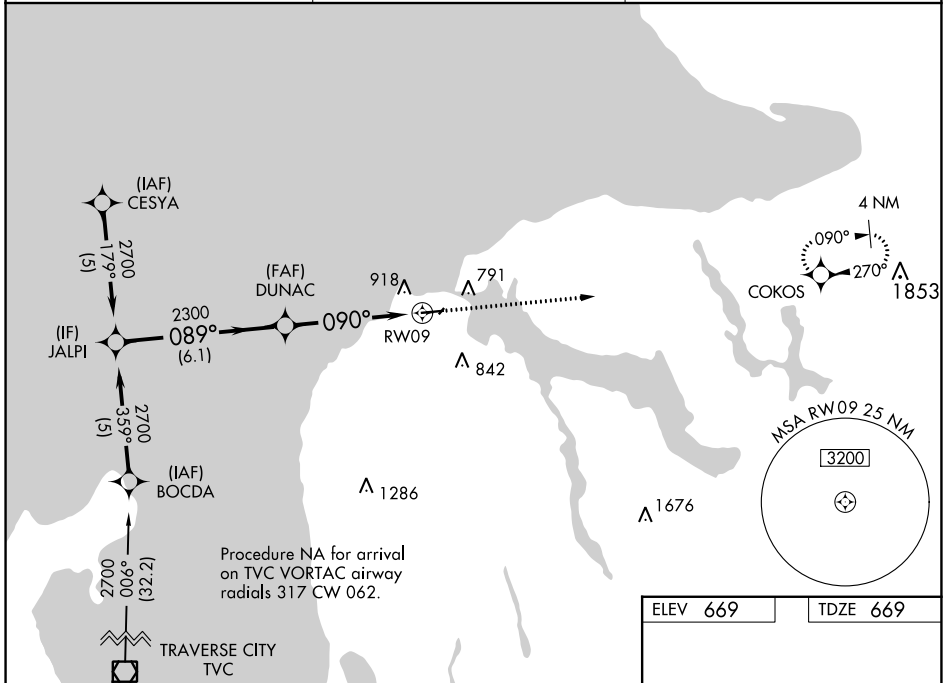
CHARLEVOIX MUNI (CVX)

RNP APCH - GPS.

⚠ Circling NA to Rwy 4 and 22. Baro-VNAV NA when using Pellston altimeter setting.
⚠ For uncompensated Baro-VNAV systems, LNAV/VNAV NA below -16°C or above 54°C.
 When local altimeter setting not received, use Pellston altimeter setting; increase LPV DA to 986 feet and all visibilities ¼ SM; increase LNAV/VNAV DA to 1270 feet and all visibilities ¼ SM; increase all MDA 80 feet and visibility Cats C and D ¼ SM.

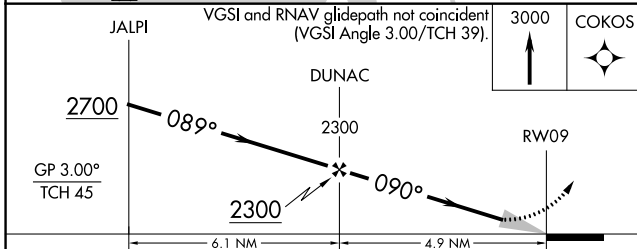
MISSED APPROACH:
Climb to 3000 direct COKOS and hold.

AWOS-3P 120.0	MINNEAPOLIS CENTER 134.6 354.05	UNICOM 122.8 (CTAF)
-------------------------	---	-------------------------------



EC-1, 31 OCT 2024 to 28 NOV 2024

EC-1, 31 OCT 2024 to 28 NOV 2024



ELEV 669	TDZE 669
----------	----------

REIL Rwy 9 and 27
MIRL Rwy 9-27

CATEGORY	A	B	C	D
LPV DA	919-¾ 250 (300-¾)			
LNAV/VNAV DA	1203-1½ 534 (600-1½)			
LNAV MDA	1160-1 491 (500-1)		1160-1⅓ 491 (500-1⅓)	
CIRCLING	1280-1 611 (700-1)		1280-1¾ 611 (700-1¾)	1360-2¼ 691 (700-2¼)