

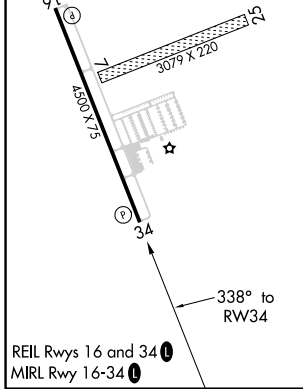
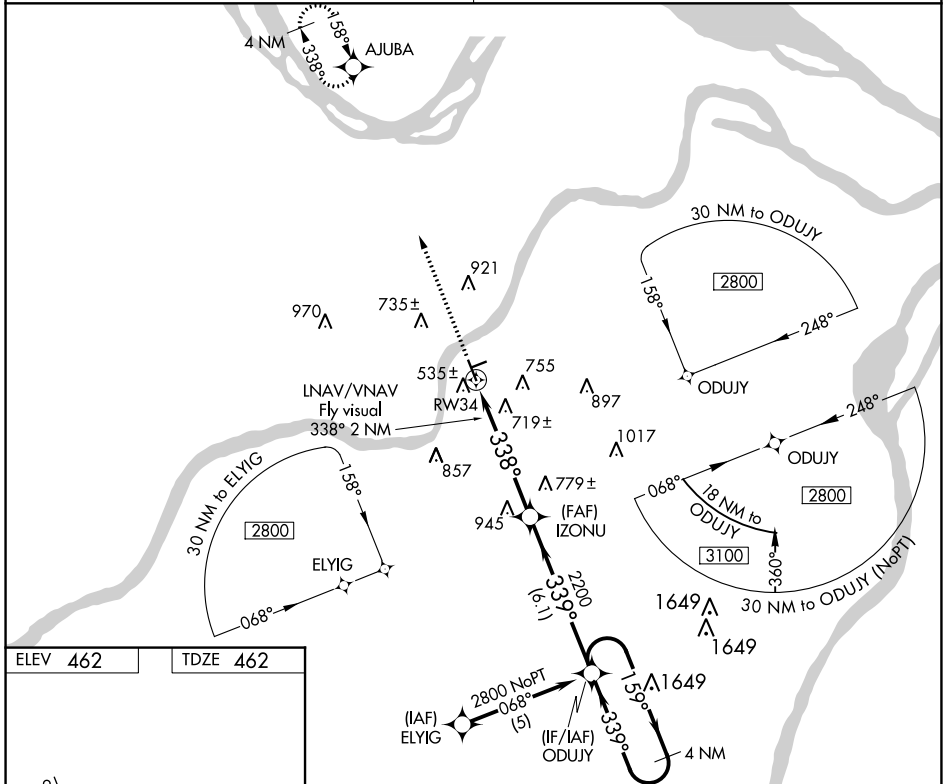
WAAS CH 93905 W34A	APP CRS 338°	Rwy Idg 4500 TDZE 462 Apt Elev 462
--	------------------------	---

RNAV (GPS) RWY 34

CREVE COEUR (1H0)

RNP APCH.	Use St Louis Lambert Intl altimeter setting. Baro-VNAV NA. Circling Rwy 16 NA at night. Circling NA to Rws 7 and 25. Rwy 34 helicopter visibility reduction below 3/4 SM NA.	MISSED APPROACH: Climb to 2700 direct AJUBA and hold.
-----------	---	--

ST. LOUIS APP CON 126.5 254.3	UNICOM 122.8 (CTAF)
---	-------------------------------



2700	AJUBA	VGSI and RNAV glidepath not coincident. (VGSI Angle 3.00/TCH 43).	4 NM Holding Pattern
	ODUJY		
	IZONU		
	RW34		
	LNNAV/VNAV Fly visual 338° 2 NM		
		5.3 NM	6.1 NM

CATEGORY	A	B	C	D
LPV DA	809-1 347 (400-1 1/4)			NA
LNNAV/VNAV DA	1131-2	669 (700-2)		NA
LNNAV MDA	1080-1	618 (700-1)		NA
CIRCLING	1080-1	1120-1		
	618 (700-1)	658 (700-1)		NA

NC-3, 31 OCT 2024 to 28 NOV 2024

NC-3, 31 OCT 2024 to 28 NOV 2024