

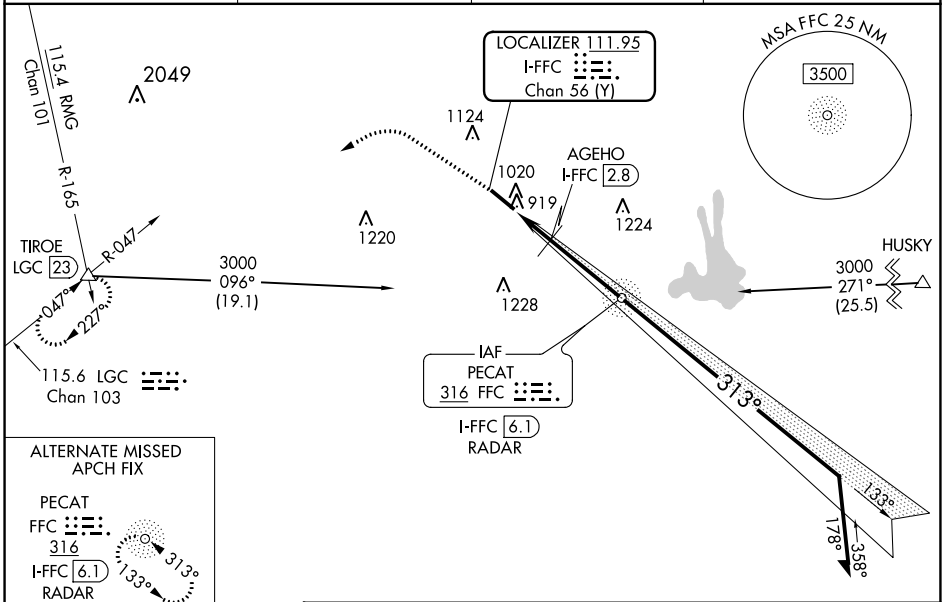
LOC/DME I-FFC 111.95 Chan 56 (Y)	APP CRS 313°	Rwy Idg TDZE Apt Elev	5118 807 808
---	------------------------	-----------------------------	---

ILS or LOC RWY 31

ATLANTA RGNL FALCON FLD (F'F'C)

DME or ADF or RADAR required.		ODALS 	MISSED APPROACH: Climb to 1700 then climbing left turn to 4000 on heading 275° and LGC VORTAC R-047 to TIROE INT/LGC 23 DME and hold.
	Circling Rwy 13 NA at night. Rwy 31 helicopter visibility reduction below 3/4 SM NA. Inop table does not apply to S-ILS 31 and to S-LOC 31 Cats C/D.		

ASOS 118.525	ATLANTA APP CON 119.8 354.125	CLNC DEL 119.8	UNICOM 123.05 (CTAF)
------------------------	---	--------------------------	--------------------------------

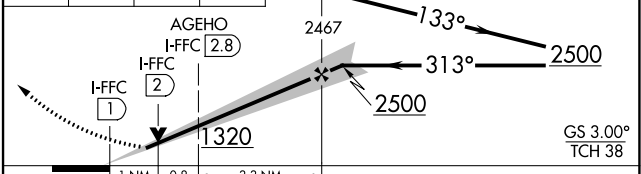
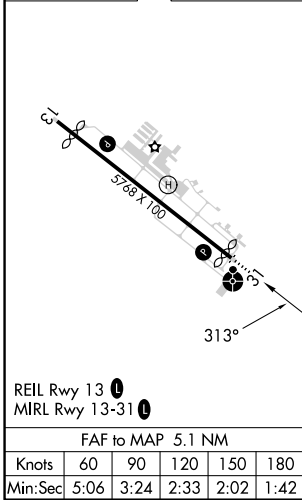


ALTERNATE MISSED APCH FIX

PECAT
FFC 316
I-FFC 6.1
RADAR

ELEV 808	D	TDZE 807
----------	----------	----------

1700	4000	LGC R-047	TIROE	FFC NDB PECAT I-FFC 6.1 RADAR	VGSI and ILS glidepath not coincident (VGSI Angle 3.00/TCH 45). Remain within 10 NM
	hdg 275°				



CATEGORY	A	B	C	D
S-ILS 31	1059-3/4 252 (300-3/4)			
S-LOC 31	1320-3/4	513 (600-3/4)	1320-1 3/8	513 (600-1 3/8)
C CIRCLING	1320-1	512 (600-1)	1440-1 3/4 632 (700-1 3/4)	1540-2 1/4 732 (800-2 1/4)
AGEHO FIX MINIMUMS (DME REQUIRED)				
S-LOC 31	1180-3/4	373 (400-3/4)	1180-1	373 (400-1)
C CIRCLING	1320-1	512 (600-1)	1440-1 3/4 632 (700-1 3/4)	1540-2 1/4 732 (800-2 1/4)

SE-4, 31 OCT 2024 to 28 NOV 2024

SE-4, 31 OCT 2024 to 28 NOV 2024