

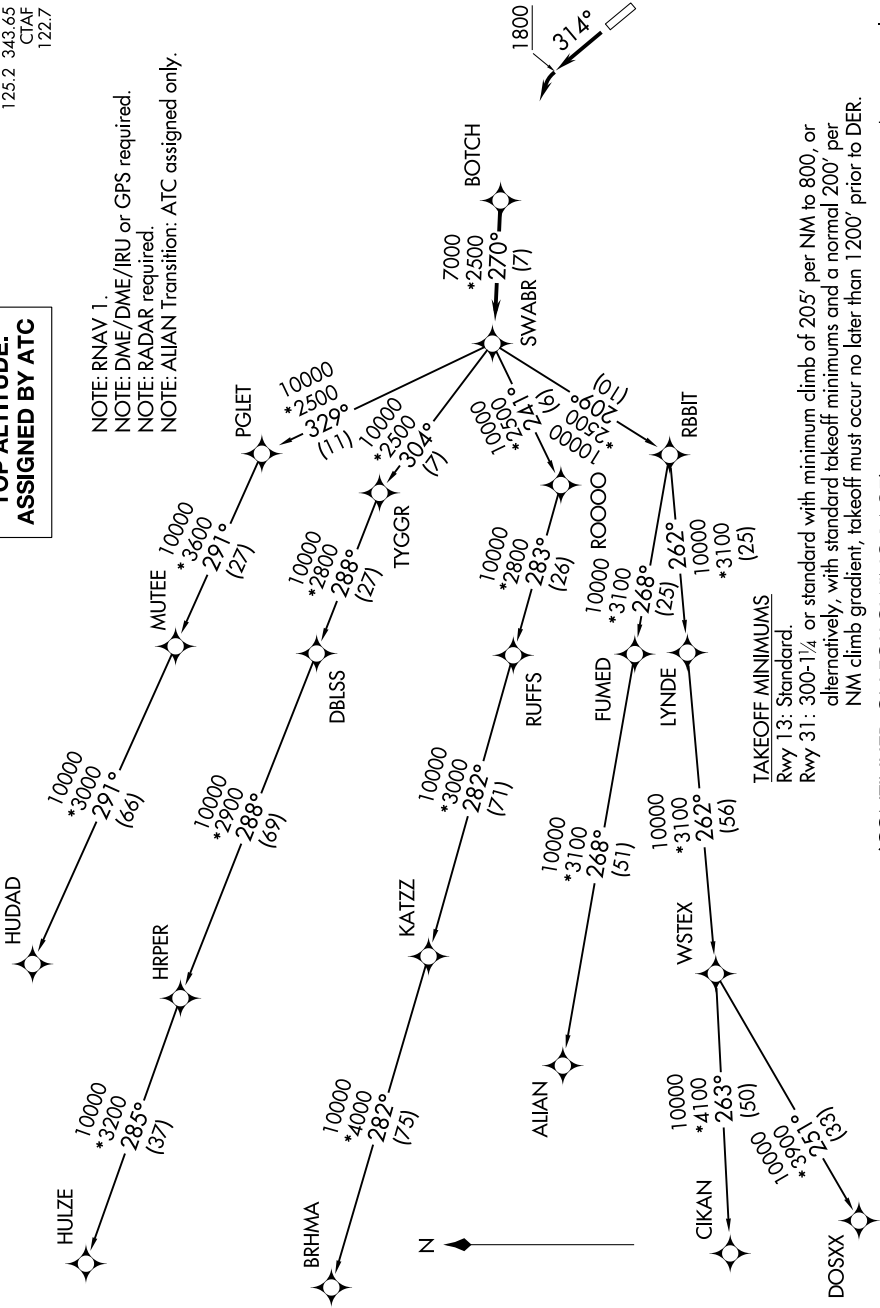
SWABR ONE DEPARTURE (RNAV)

SC-2, 31 OCT 2024 to 28 NOV 2024

TOP ALTITUDE: ASSIGNED BY ATC

LONE STAR DEP CON
125.2 343.65
CTAF
122.7

NOTE: RNAV 1.
NOTE: DME/DME/IRU or GPS required.
NOTE: RADAR required.
NOTE: ALIANT Transition: ATC assigned only.



TAKEOFF MINIMUMS

Rwy 13: Standard.

Rwy 31: 300-1¼ or standard with minimum climb of 205' per NM to 800, or alternatively, with standard takeoff minimums and a normal 200' per NM climb gradient, takeoff must occur no later than 1200' prior to DER.

NOTE: Chart not to scale.

(CONTINUED ON FOLLOWING PAGE)

SC-2, 31 OCT 2024 to 28 NOV 2024

SWABR ONE DEPARTURE (RNAV)