

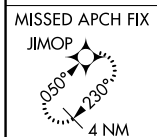
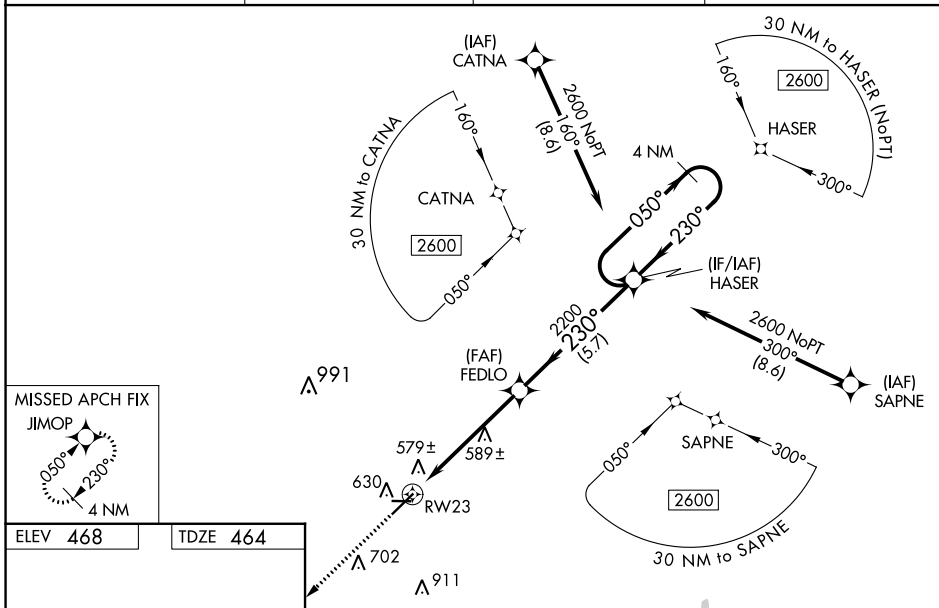
| | | | |
|--|------------------------|-----------------------------|---|
| WAAS CH 70724 W23A | APP CRS 230° | Rwy Idg TDZE Apt Elev | 6011 464 468 |
|--|------------------------|-----------------------------|---|

RNAV (GPS) RWY 23

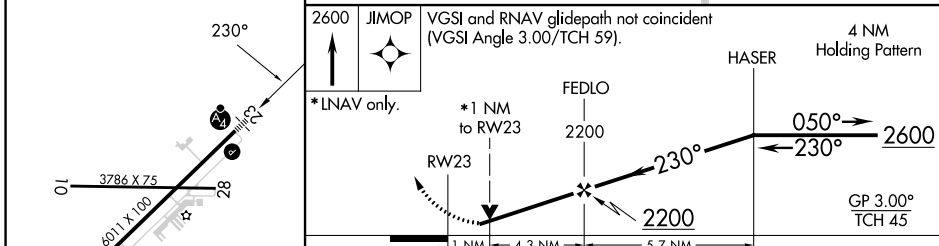
JIMMY CARTER RGNL (ACJ)

| | | |
|--|--|--|
| RNP APCH-GPS. | | MALSF MISSED APPROACH: Climb to 2600 direct JIMOP and hold. |
| Baro-VNAV NA and VDP NA when using Columbus altimeter setting. For uncompensated Baro-VNAV systems, LNAV/VNAV NA below -15°C or above 41°C. For inop ALS when using Columbus altimeter setting, increase LPV and LNAV/VNAV all Cats visibility to 1 1/8 SM. Rwy 23 helicopter visibility reduction below 3/4 SM NA. When local altimeter setting not received, use Columbus altimeter setting and increase LPV DA to 876 feet and all visibilities 1/4 SM; increase LNAV/VNAV DA to 881 feet and all visibilities 1/4 SM; increase all MDAs 120 feet and LNAV visibility Cats C/D 3/8 SM, and Circling visibility Cat C 1/2 SM and Cat D 1/4 SM. For inop ALS, increase LPV and LNAV/VNAV all Cats visibility to 3/8 SM. Circling Rwy 10, 28 NA at night. | | |

| | | | |
|--------------------------|---|---------------------------|-------------------------------|
| AWOS-3 128.375 | ATLANTA APP CON * 124.2 323.1 | CLNC DEL 119.95 | UNICOM 122.8 (CTAF) |
|--------------------------|---|---------------------------|-------------------------------|



| | |
|-----------------|-----------------|
| ELEV 468 | TDZE 464 |
|-----------------|-----------------|



| CATEGORY | A | B | C | D |
|--------------|---------|---------------|-------------------------------|-------------------------------|
| LPV DA | | 760-3/4 | 296 (300-3/4) | |
| LNAV/VNAV DA | | 765-3/4 | 301 (300-3/4) | |
| LNAV MDA | 840-3/4 | 376 (400-3/4) | 840-3/4 | 376 (400-3/4) |
| CIRCLING | 940-1 | 472 (500-1) | 1020-1 1/2 552 (600-1 1/2) | 1280-2 3/4 812 (900-2 3/4) |

REIL Rwy 23
HIRL Rwy 5-23

SE-4, 31 OCT 2024 to 28 NOV 2024

SE-4, 31 OCT 2024 to 28 NOV 2024