

(DORRL2.DORRL) 24081

AL-5972 (FAA)

POMPANO BEACH AIRPARK (PMP)  
POMPANO BEACH, FLORIDA

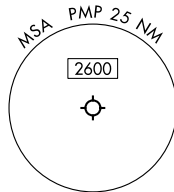
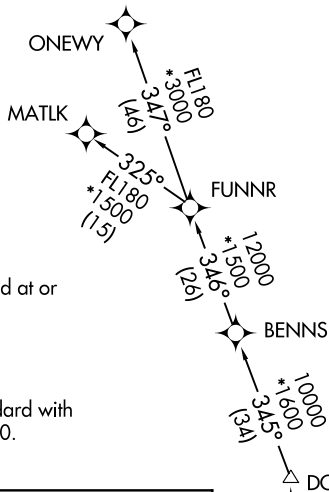
# DORRL TWO DEPARTURE (RNAV)

MIAMI DEP CON  
126.05 251.1  
ATIS  
120.55  
GND CON  
121.9  
POMPANO BEACH TOWER ★  
125.4 (CTAF)

**TOP ALTITUDE:  
ASSIGNED BY ATC**

RNAV 1 - DME/DME/IRU or GPS.

RADAR required.



NOTE: For turbo-props/props filed at or above 13000.

### TAKEOFF MINIMUMS

Rwys 6, 10, 15, 24, 28, 33: Standard with minimum climb of 500'/NM to 520.

### DEPARTURE ROUTE DESCRIPTION

**TAKEOFF RUNWAY 6:** Climb on heading 060° or as assigned by ATC for RADAR vectors to cross LIFRR at or above 4000, thence. . .

**TAKEOFF RUNWAY 10:** Climb on heading 105° or as assigned by ATC for RADAR vectors to cross LIFRR at or above 4000, thence. . .

**TAKEOFF RUNWAY 15:** Climb on heading 150° or as assigned by ATC for RADAR vectors to cross LIFRR at or above 4000, thence. . .

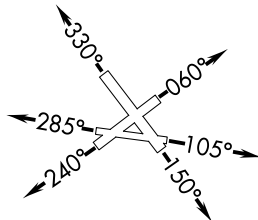
**TAKEOFF RUNWAY 24:** Climb on heading 240° or as assigned by ATC for RADAR vectors to cross LIFRR at or above 4000, thence. . .

**TAKEOFF RUNWAY 28:** Climb on heading 285° or as assigned by ATC for RADAR vectors to cross LIFRR at or above 4000, thence. . .

**TAKEOFF RUNWAY 33:** Climb on heading 330° or as assigned by ATC for RADAR vectors to cross LIFRR at or above 4000, thence. . .

. . . on track 002° to BOGYY, then on track 005° to DORRL then on (transition), maintain altitude as assigned by ATC, expect filed altitude 10 minutes after departure.

MATLK TRANSITION (DORRL2.MATLK)  
ONEWY TRANSITION (DORRL2.ONEWY)



NOTE: Chart not to scale.

# DORRL TWO DEPARTURE (RNAV)

(DORRL2.DORRL) 21MAR24

POMPANO BEACH, FLORIDA  
POMPANO BEACH AIRPARK (PMP)

SE-3, 31 OCT 2024 to 28 NOV 2024

SE-3, 31 OCT 2024 to 28 NOV 2024