

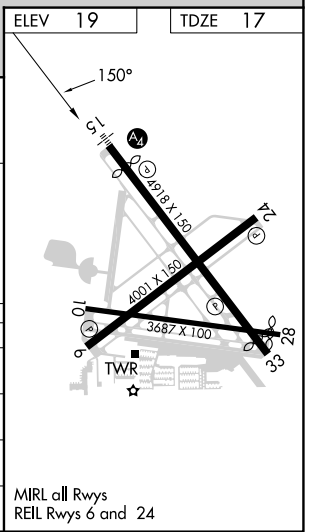
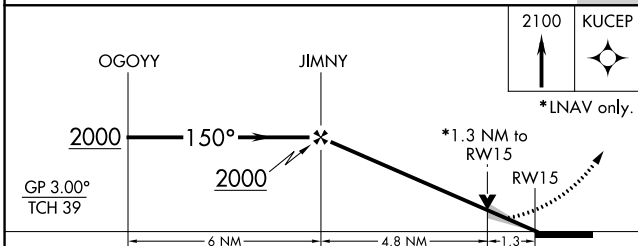
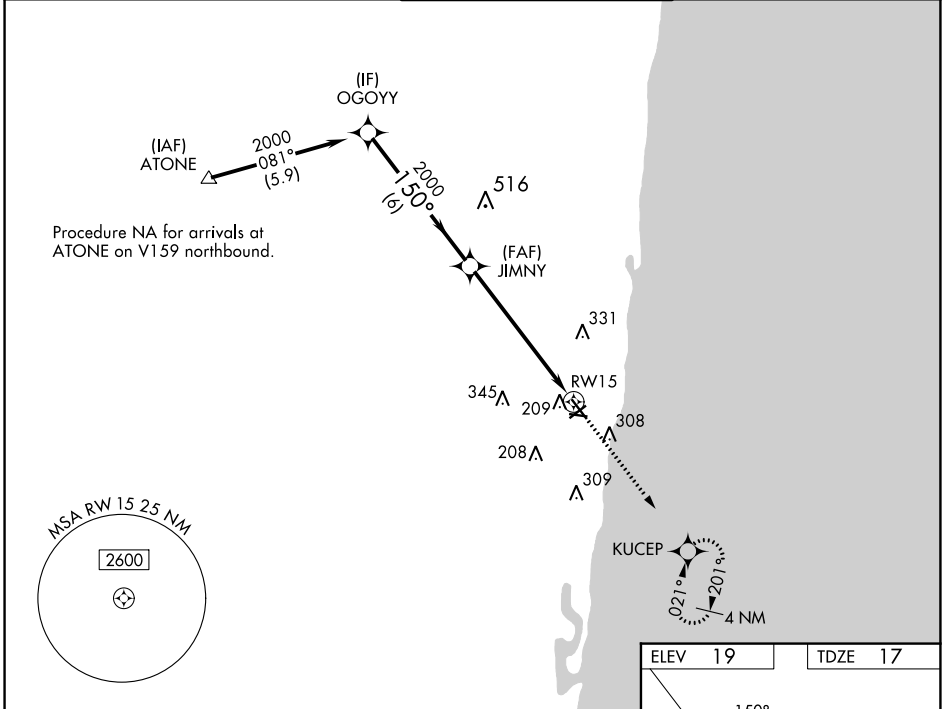
WAAS CH 82500 W15A	APP CRS 150°	Rwy Idg TDZE Apt Elev	4418 17 19
---------------------------------	------------------------	-----------------------------	---------------------------------------

RNAV (GPS) RWY 15

POMPANO BEACH AIRPARK (PMP)

<p>⚠ Inop table does not apply. For uncompensated Baro-VNAV systems, LNAV/VNAV NA below 0°C (32°F) or above 54°C (130°F). DME/DME RNP-0.3 NA. When local altimeter setting not received, use Fort Lauderdale Exec altimeter setting.</p>	MALS	MISSED APPROACH: Climb to 2100 direct KUCEP and hold.

ATIS 120.55	MIAMI APP CON 119.7 306.3	POMPANO BEACH TOWER * 125.4 (CTAF) 0	GND CON 121.9	UNICOM 122.95
-----------------------	-------------------------------------	--	-------------------------	-------------------------



CATEGORY	A	B	C	D
LPV DA	296-3/4	279 (300-3/4)		NA
LNAV/VNAV DA	399-1	382 (400-1)		NA
LNAV MDA	480-1	463 (500-1)		NA
CIRCLING	660-1	641 (700-1)		NA

SE-3, 31 OCT 2024 to 28 NOV 2024

SE-3, 31 OCT 2024 to 28 NOV 2024