

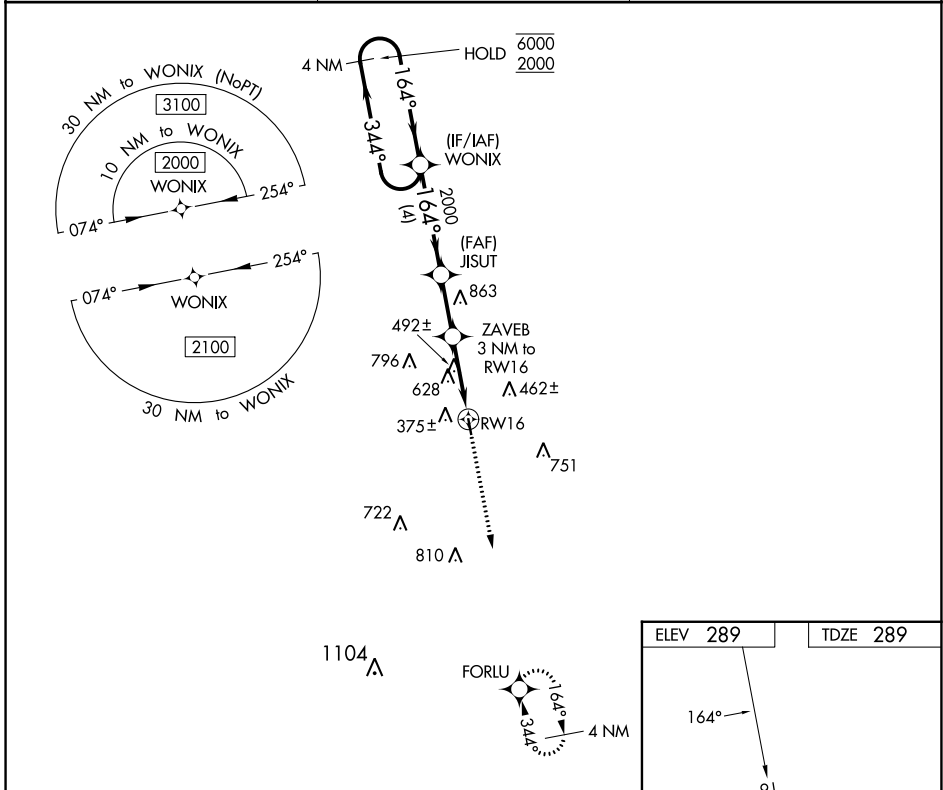
WAAS CH 87125 W16A	APP CRS 164°	Rwy Idg TDZE Apt Elev	3218 289 289
--	------------------------	-----------------------------	---

RNAV (GPS) RWY 16

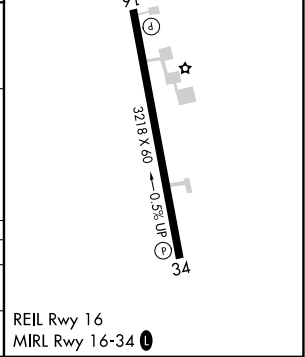
KENEDY RGNL (2R.9)

RNP APCH.	MISSED APPROACH: Climb to 2000 direct FORLU and hold.
<p>Procedure NA at night. When local altimeter setting not received, use Pleasanton altimeter setting. Rwy 16 helicopter visibility reduction below 1 SM NA.</p>	

AWOS 3-PT 118.45	HOUSTON CENTER 134.6 322.5	UNICOM 123.0 (CTAF) 0
----------------------------	--------------------------------------	---------------------------------



4 NM Holding Pattern		Visual Segment - Obstacles.		2000	FORLU
<p>6000 ← 344°</p> <p>2000 ← 164°</p>		<p>WONIX</p> <p>JISUT</p> <p>ZAVEB 3 NM to RWY 16</p> <p>1260</p> <p>RWY 16</p>		↑	✦
4 NM		2.3 NM		3 NM	
CATEGORY	A	B	C	D	
LP MDA	860-1	571 (600-1)	NA		
LNAV MDA	1040-1 751 (800-1)	1040-1¼ 751 (800-1¼)	NA		



SC-3, 31 OCT 2024 to 28 NOV 2024

SC-3, 31 OCT 2024 to 28 NOV 2024