

APP CRS	Rwy Idg	5000
301°	TDZE	1070
	Apt Elev	1086

RNAV (GPS) RWY 30

MONROE MUNI (E.F.T)

RNP APCH-GPS.

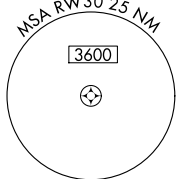
⚠ When local altimeter setting not received, use Albetus altimeter setting and increase all MDA 100 feet, increase LNAV Cat C/D and Circling Cat C visibility ¼ mile.
⚠ VDP NA when using Albetus altimeter setting. Rwy 30 helicopter visibility reduction below ¾ SM NA. Circling to Rwy 2-20 NA at night.

MISSED APPROACH:
 Climbing left turn to 3000 direct DAVIS and hold.

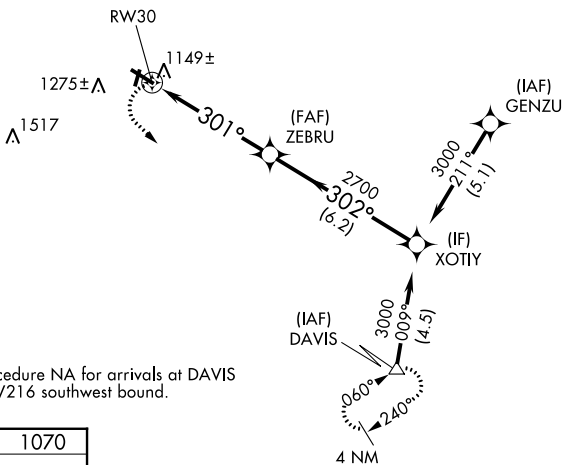
AWOS-3
118.375

ROCKFORD APP CON
126.0 327.0

UNICOM
123.05 (CTAF) 0



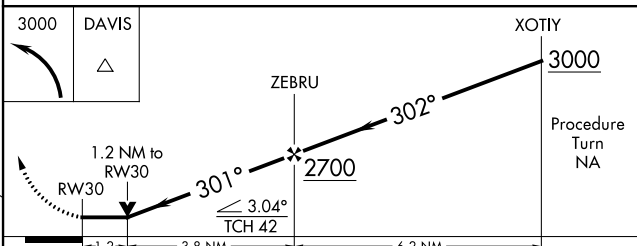
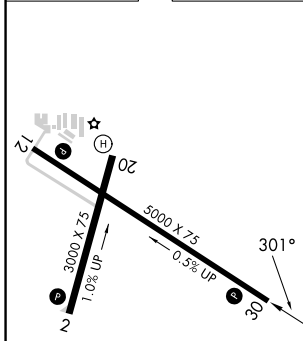
2049 **⚠**



EC-3, 31 OCT 2024 to 28 NOV 2024

EC-3, 31 OCT 2024 to 28 NOV 2024

ELEV 1086	TDZE 1070
-----------	-----------



CATEGORY	A	B	C	D
LNAV MDA	1480-1	410 (400-1)	1480-1¼	410 (400-1¼)
CIRCLING	1540-1 454 (500-1)	1640-1 554 (600-1)	1640-1½ 554 (600-1½)	1640-2 554 (600-2)

MONROE, WISCONSIN
 Orig-B 20MAY21

42°37'N-89°35'W

MONROE MUNI (E.F.T)
RNAV (GPS) RWY 30