

VORTAC VXV 116.4 Chan 111	APP CRS 102°	Rwy Idg TDZE Apt Elev	5506 1014 1014
---	------------------------	-----------------------------	---

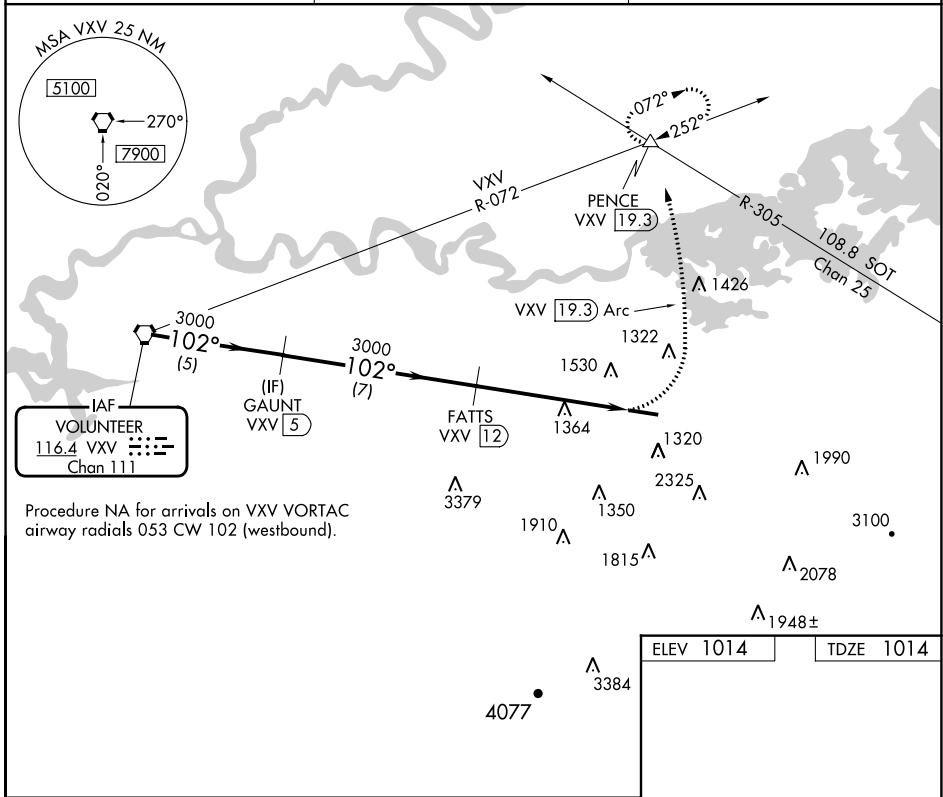
VOR/DME RWY 10

GATLINBURG-PIGEON FORGE (GKT)

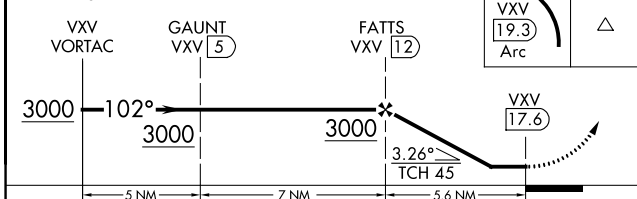
Procedure NA at night. Helicopter visibility reduction below 1 SM NA.
 When local altimeter setting not received, use Mc Ghee Tyson altimeter setting and increase all MDAs 60 feet and S-10 visibility Cat A ¼ SM.

MISSED APPROACH: Climbing left turn to 4000 on VXV VORTAC 19.3 DME CCW Arc to PENCE INT/VXV 19.3 DME and hold, continue climb-in-hold to 4000.

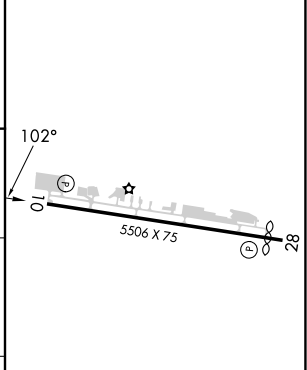
AWOS-3 126.875	KNOXVILLE APP CON 132.8 360.8	UNICOM 123.0 (CTAF) 0
--------------------------	---	---------------------------------



Procedure NA for arrivals on VXV VORTAC airway radials 053 CW 102 (westbound).



ELEV 1014	TDZE 1014
-----------	-----------



VGSI and descent angles not coincident (VGSI Angle 3.50/TCH 33).

CATEGORY	A	B	C	D
S-10	1840-1 826 (900-1)	1840-1¼ 826 (900-1¼)	1840-2½ 826 (900-2½)	1840-2¾ 826 (900-2¾)
CIRCLING	1840-1¼ 826 (900-1¼)	1880-1¼ 866 (900-1¼)	2040-3 1026 (1100-3)	2680-3 1666 (1700-3)

REIL Rwy 10 and 28 **0**
 MRL Rwy 10-28 **0**

SE-1, 31 OCT 2024 to 28 NOV 2024

SE-1, 31 OCT 2024 to 28 NOV 2024