

APP CRS	Rwy Idg	3005
359°	TDZE	60
	Apt Elev	62

RNAV (GPS) RWY 36

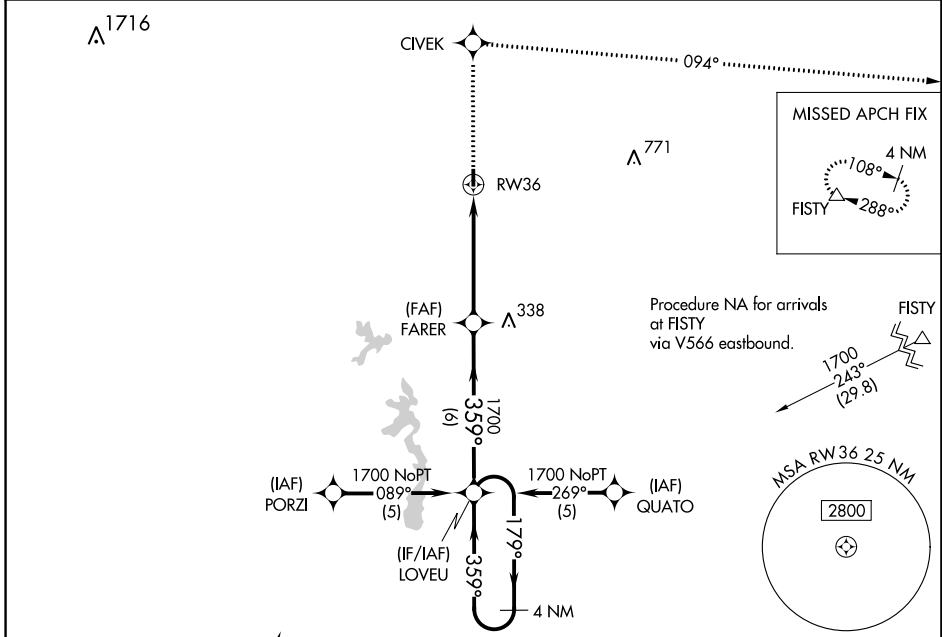
BUNKIE MUNI (2R6)

NA DME/DME RNP-0.3 NA. Visibility reduction by helicopters NA. Use Alexandria Intl altimeter setting; when not received, use Esler Rgnl altimeter setting.

MISSED APPROACH: Climb to 4000 direct CIVEK and right turn via 094° track to FISTY and hold.

POLK APP CON
125.4 302.2

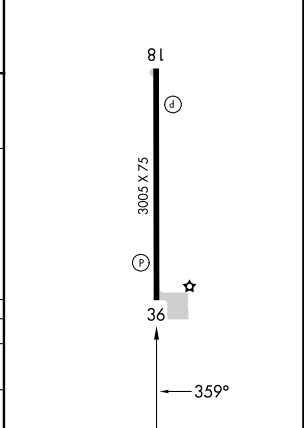
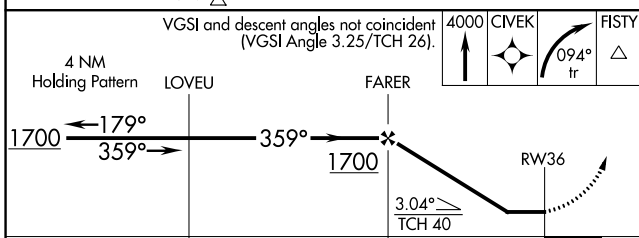
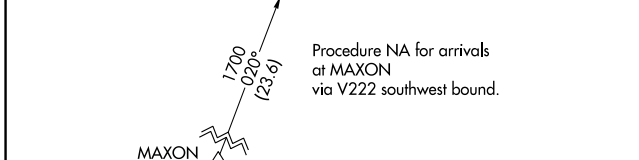
CTAF
122.9



ELEV	62	TDZE	60
------	-----------	------	-----------

REIL Rwy 18 and 36 \bullet

MIRL Rwy 18-36 \bullet



CATEGORY	A	B	C	D
LNVA MDA	580-1 520 (600-1)		NA	
CIRCLING	580-1 518 (600-1)	660-1 598 (600-1)	NA	

SC-4, 31 OCT 2024 to 28 NOV 2024

SC-4, 31 OCT 2024 to 28 NOV 2024