

APP CRS	Rwy Idg	<b>5812</b>
<b>315°</b>	TDZE	<b>42</b>
	Apt Elev	<b>46</b>

# RNAV (GPS) RWY 31

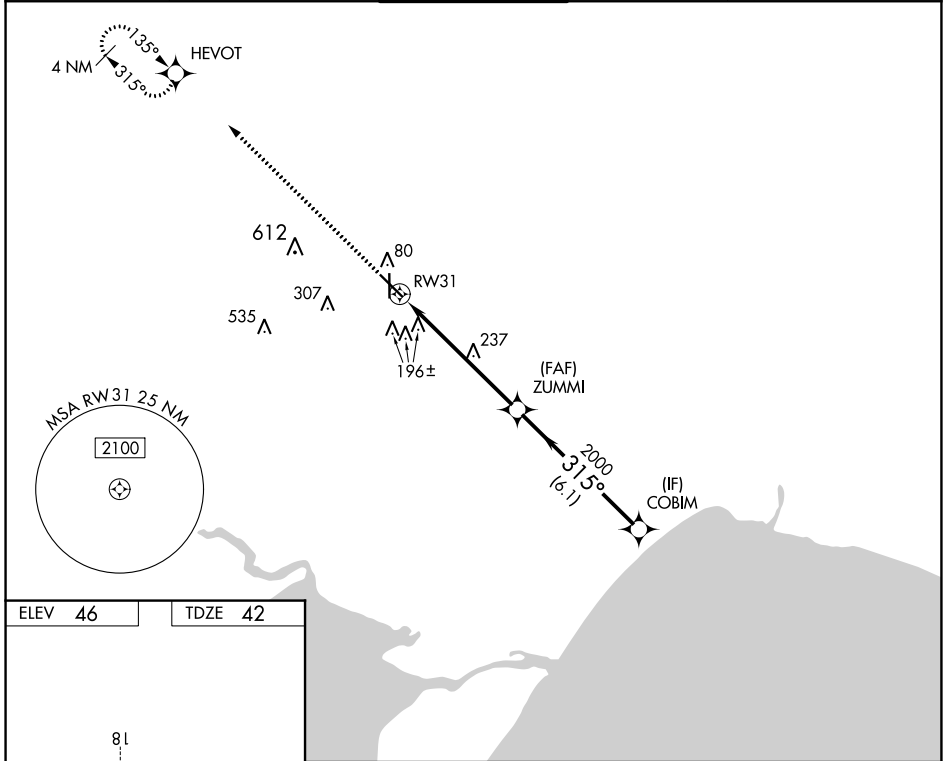
HAMMOND NORTHSORE RGNL (HDC)

RNP APCH - GPS.

**▼** Rwy 31 helicopter visibility reduction below 3/4 SM NA. VDP NA when using Louis Armstrong New Orleans Intl altimeter setting. When local altimeter setting not received, use Louis Armstrong New Orleans Intl altimeter setting and increase all MDAs 100 feet and LNAV visibility Cat C/D 1/2 SM, and Circling visibility Cat C/D 1/2 SM.

**MISSED APPROACH:**  
Climb to 2000 direct HEVOT and hold.

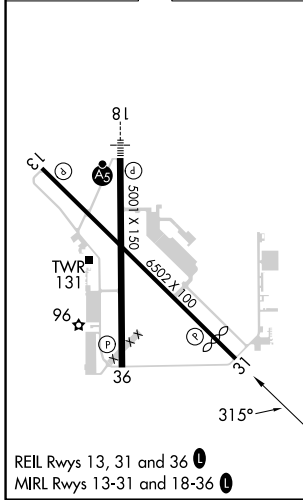
ATIS <b>118.325</b>	NEW ORLEANS APP CON <b>119.3 350.35</b>	<b>HAMMOND TOWER ★</b> <b>120.575 (CTAF) 0</b>	GND CON <b>119.85</b>	CLNC DEL <b>119.3</b> (When twr closed)
------------------------	--	---	--------------------------	---



SC-4, 31 OCT 2024 to 28 NOV 2024

SC-4, 31 OCT 2024 to 28 NOV 2024

ELEV 46	TDZE 42
---------	---------



2000	HEVOT	ZUMMI	COBIM
↑	✦		
1.2 NM to RW31		1.2 NM	6.1 NM
315°		315°	315°
2000		2000	2000
VGSIs and descent angles not coincident (VGSi Angle 3.30/TCH 56).			
1.2 NM	4.8 NM	6.1 NM	
CATEGORY	A	B	C
LNAV MDA	500-1	458 (500-1)	500-1 3/8
			458 (500-1 3/8)
<b>C</b> CIRCLING	500-1	454 (500-1)	620-1 1/2
			574 (600-1 1/2)
			920-2 3/4
			874 (900-2 3/4)