

WAAS CH <b>42718</b> <b>W36A</b>	APP CRS <b>360°</b>	Rwy ldg TDZE Apt Elev	<b>5001</b> <b>42</b> <b>46</b>
--	------------------------	-----------------------------	---------------------------------------

# RNAV (GPS) RWY 36

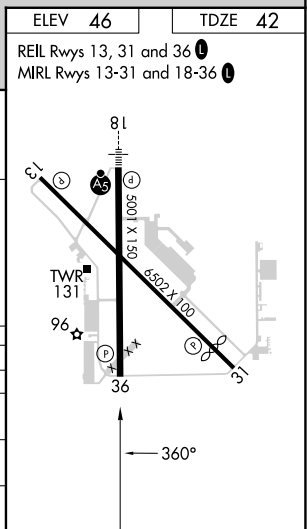
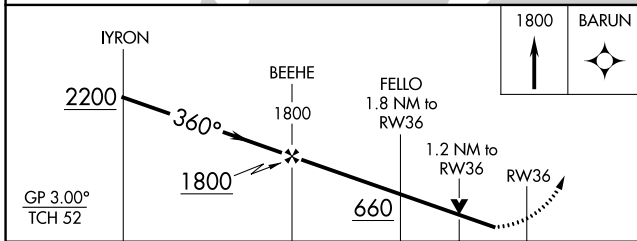
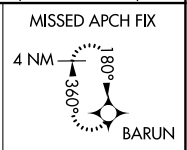
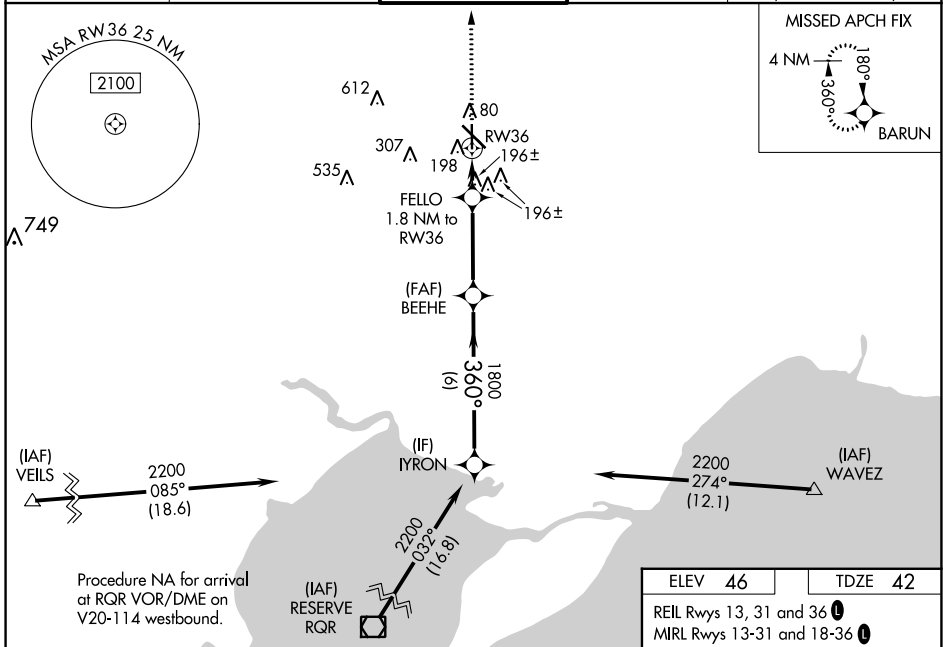
HAMMOND NORTHSORE RGNL (HDC)

RNP APCH - GPS.

**⚠** Baro-VNAV and VDP NA when using Louis Armstrong New Orleans Intl altimeter setting.  
**⚠** Rwy 36 helicopter visibility reduction below 3/4 SM NA. For uncompensated Baro-VNAV systems, LNAV/VNAV NA below -15°C or above 54°C. When local altimeter setting not received, use Louis Armstrong New Orleans Intl altimeter setting and increase LPV DA to 374 feet and all visibilities 1/4 SM; increase LNAV/VNAV DA to 528 feet and all visibilities 1/4 SM; increase all MDAs 100 feet and LNAV visibility Cat C/D 1/4 SM, and Circling visibility Cat C/D 1/2 SM.

**MISSED APPROACH:**  
 Climb to 1800 direct BARUN and hold.

ATIS <b>118.325</b>	NEW ORLEANS APP CON <b>119.3 350.35</b>	HAMMOND TOWER ★ <b>120.575</b> (CTAF) <b>0</b>	GND CON <b>119.85</b>	CLNC DEL <b>119.3</b> (When twr closed)
------------------------	--	---	--------------------------	---



CATEGORY	A	B	C	D
LPV DA	292-3/4		250 (300-3/4)	
LNAV/VNAV DA	446-1 1/8		404 (400-1 1/8)	
LNAV MDA	460-1	418 (500-1)	460-1 1/8	418 (500-1 1/8)
<b>C</b> CIRCLING	500-1	454 (500-1)	620-1 1/2 574 (600-1 1/2)	920-2 3/4 874 (900-2 3/4)

SC-4, 31 OCT 2024 to 28 NOV 2024

SC-4, 31 OCT 2024 to 28 NOV 2024