

| | | |
|--|------------------------|--|
| LOC/DME I-ECH 109.3 Chan 30 | APP CRS 115° | Rwy Idg TDZE Apt Elev 7500 92 92 |
|--|------------------------|--|

ILS Y or LOC Y RWY 11

KETCHIKAN INTL (KTN)(PAKT)

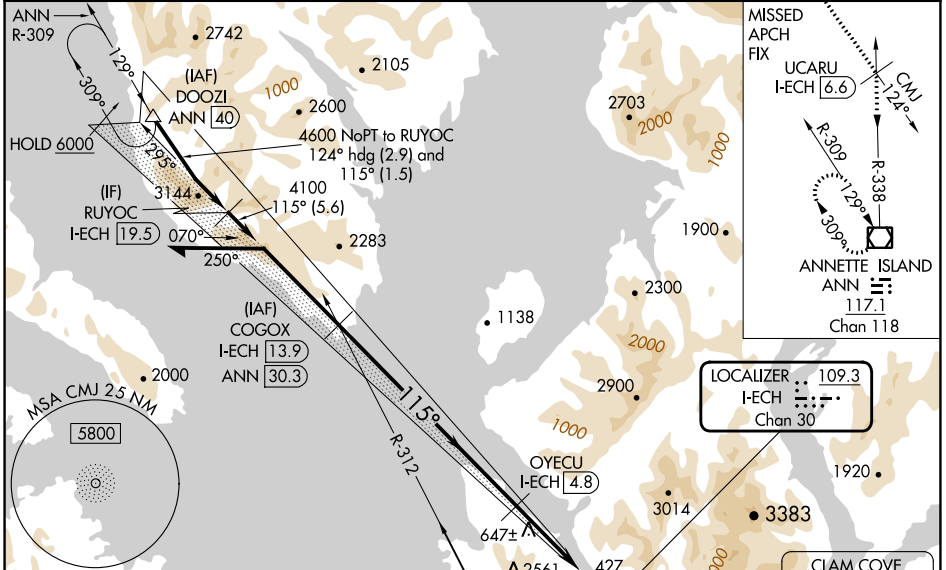
ADF required. DME required.

⚠ Rwy 11 helicopter visibility reduction below RVR 4000 NA. For inop ALS, increase #S-ILS 11 visibility to RVR 6000.
*RVR 1800 authorized with the use of FD or AP or HUD to DA.

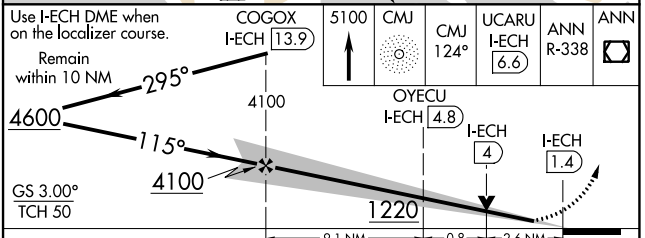
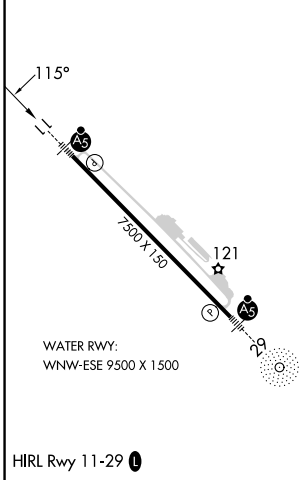
MALSRL

MISSED APPROACH: Climb to 5100 direct CMJ NDB and on CMJ NDB bearing 124° to UCARU/I-ECH 6.6 DME and on ANN VOR/DME R-338 to ANN VOR/DME and hold, continue climb-in-hold to 5100.
*Missed approach requires minimum climb of 305 feet per NM to 4000; if unable to meet climb gradient, see LOC X RWY 11.
#Missed approach requires minimum climb of 270 feet per NM to 4000; if unable to meet climb gradient, see LOC X RWY 11.
Missed approach requires minimum climb of 235 feet per NM to 4000; if unable to meet climb gradient, see LOC X RWY 11.

| | | |
|------------------------------|---|---|
| AFIS 134.45 | ANCHORAGE CENTER 118.5 284.6 | KETCHIKAN RADIO 123.6 (CTAF) |
|------------------------------|---|---|



| | |
|---------|---------|
| ELEV 92 | TDZE 92 |
|---------|---------|



| CATEGORY | A | B | C | D |
|-----------|--------|-------------|-------------|-------------|
| S-ILS 11* | | 312/24 | 220 (300-½) | |
| S-ILS 11# | | 481/35 | 389 (400-¾) | |
| S-LOC 11 | 980/40 | 888 (900-¾) | 980-2 | 888 (900-2) |

AK, 31 OCT 2024 to 26 DEC 2024

AK, 31 OCT 2024 to 26 DEC 2024