

LOC/DME I-ECH 109.3 Chan 30	APP CRS 115°	Rwy ldg 7500 TDZE 92 Apt Elev 92
------------------------------------------	------------------------	-------------------------------------------------------------

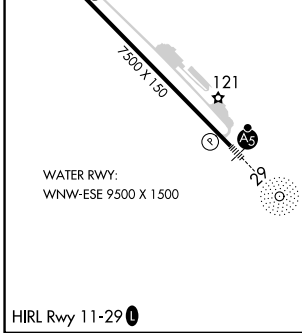
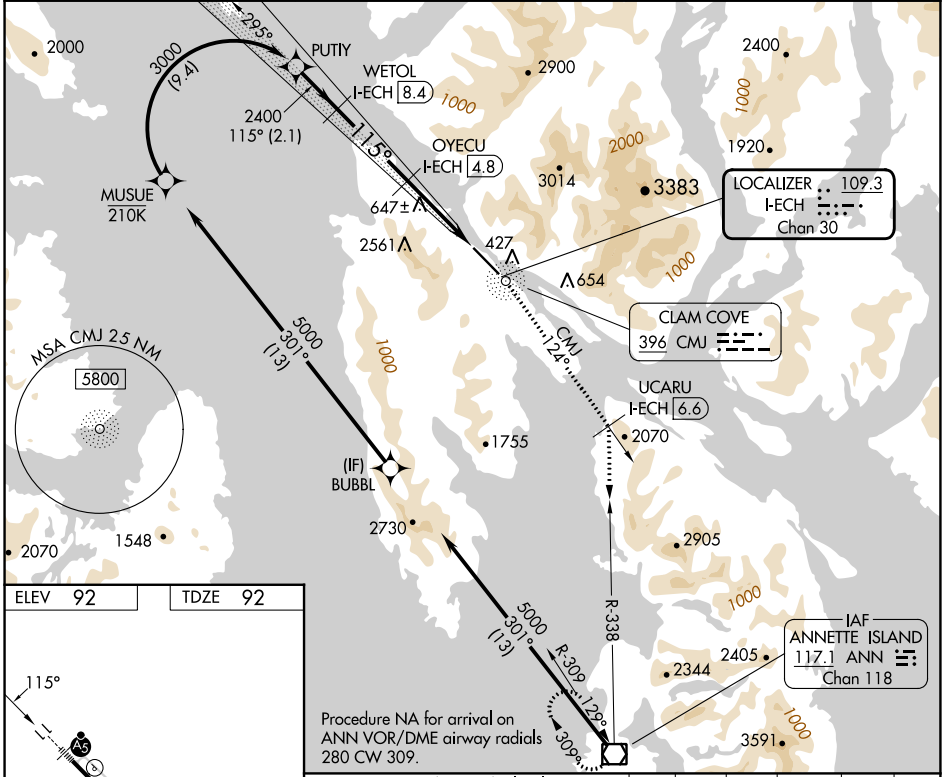
ILS Z or LOC Z RWY 11

KETCHIKAN INTL (KTN)(PAKT)

RNP APCH - GPS, RF.
ADF required. DME required.
⚠ Rwy 11 helicopter visibility reduction below RVR 4000 NA. For inop ALS, increase *S-ILS 11 visibility to RVR 6000.
*RVR 1800 authorized with the use of FD or AP or HUD to DA.

MALSRS
MISSED APPROACH: Climb to 5100 direct CMJ NDB and on CMJ NDB bearing 124° to UCARU/I-ECH 6.6 DME and on ANN VOR/DME R-338 to ANN VOR/DME and hold, continue to climb-in-hold to 5100.
*Missed approach requires minimum climb of 305 feet per NM to 4000; if unable to meet climb gradient, see LOC X RWY 11.
Missed approach requires minimum climb of 235 feet per NM to 4000; if unable to meet climb gradient, see LOC X RWY 11.

AFIS 134.45	ANCHORAGE CENTER 118.5 284.6	KETCHIKAN RADIO 123.6 (CTAF) 0
-----------------------	----------------------------------------	------------------------------------------



Use I-ECH DME when on the localizer course.

PUTIY	WETOL I-ECH 8.4	OYECU I-ECH 4.8	I-ECH 4	I-ECH 1.4
3000	2400	2400	1200	
2.1 NM	3.6 NM	0.8	2.6 NM	
GS 3.05° TCH 50				
CATEGORY	A	B	C	D
S-ILS 11*	312/24 220 (300-½)			
S-LOC 11	980/40	888 (900-¾)	980-2	888 (900-2)

AK, 31 OCT 2024 to 26 DEC 2024

AK, 31 OCT 2024 to 26 DEC 2024