

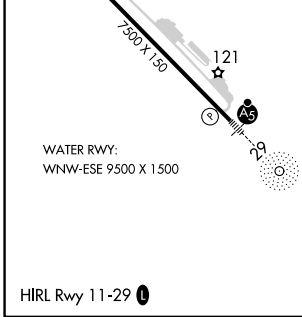
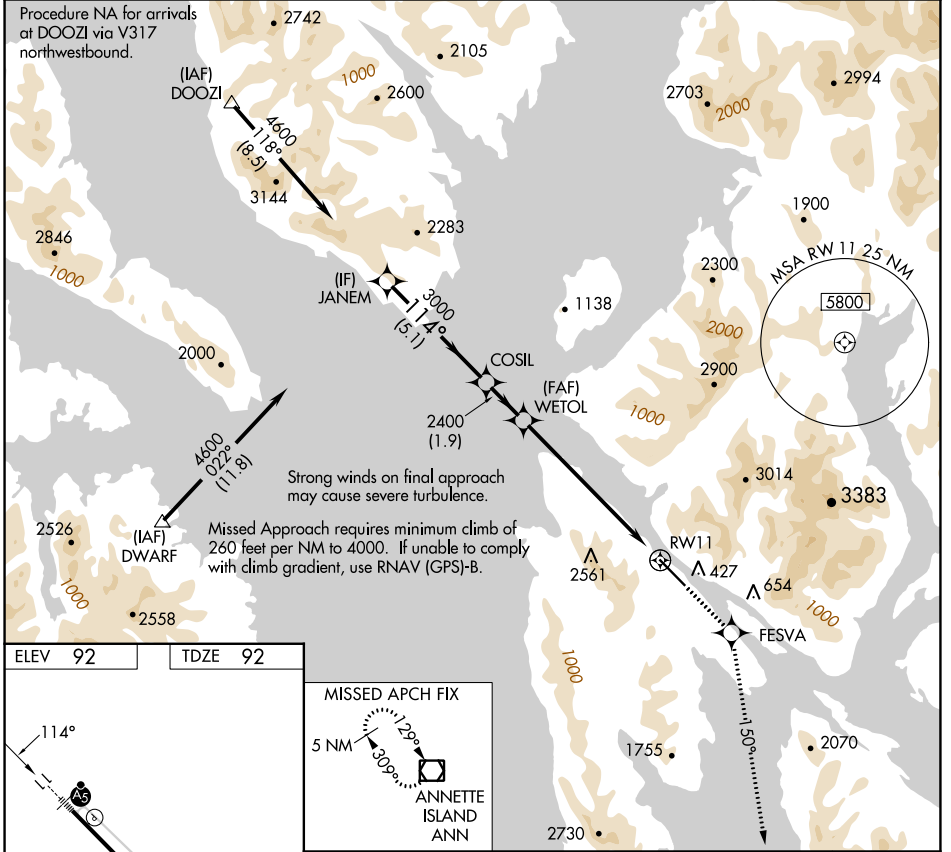
WAAS CH 58009 W11A	APP CRS 114°	Rwy Idg TDZE Apt Elev 7500 92 92
--	------------------------	--

RNAV (GPS) RWY 11

KETCHIKAN INTL (KTN)(PAKT)

RNP APCH-GPS.	MALSR	MISSED APPROACH: Climb to 5000 direct FESVA and on 150° track to ANN VOR/DME and hold.
NA For inoperative ALS, increase LPV DA visibility to RVR 6000.	AS	

AFIS 134.45	ANCHORAGE CENTER 118.5 284.6	KETCHIKAN RADIO 123.6 (CTAF)
-----------------------	--	--



ELEV 92	TDZE 92	MISSED APCH FIX					
Procedure Turn NA	JANEM	COSIL	WETOL	5000	FESVA	150° tr	ANN
GP 3.00°	TCH 50	5.1 NM	1.9 NM	6.8 NM			
CATEGORY	A	B	C	D			
LPV DA	442/40 350 (400-3/4)			NA			

AK, 31 OCT 2024 to 26 DEC 2024

AK, 31 OCT 2024 to 26 DEC 2024