

(BEAVY6.BEAVY) 24081

AL-6081 (FAA)

GASTONIA MUNI (AKH)  
GASTONIA, NORTH CAROLINA

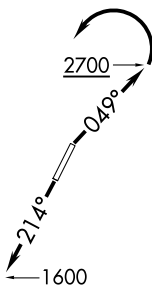
# BEAVY SIX DEPARTURE (RNAV)

CHARLOTTE DEP CON  
120.05 257.2  
ASOS  
135.725  
CLNC DEL  
127.2  
UNICOM (CTAF)  
123.0

RNAV 1-DME/DME/IRU or GPS.

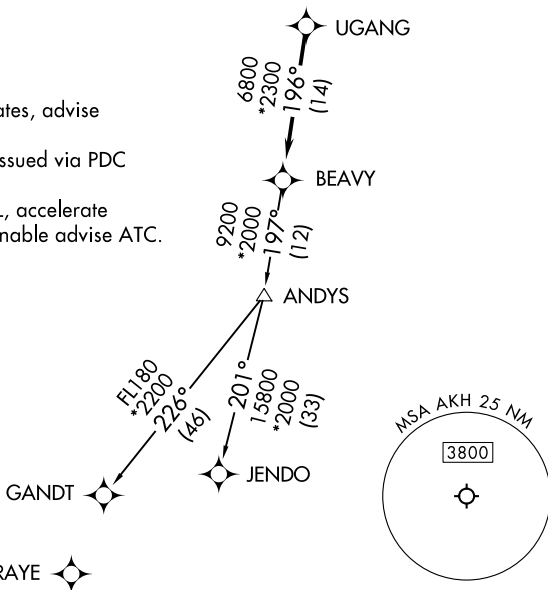
RADAR required.

**TOP ALTITUDE:  
3000**



TAKEOFF MINIMUMS  
Rwys 3, 21: Standard.

- NOTE: For turbo jets only.
- NOTE: If unable to accept climb rates, advise ATC on initial contact.
- NOTE: Transponder code will be issued via PDC or Charlotte CLNC DEL.
- NOTE: Upon reaching 10000 MSL, accelerate to and maintain 280K, if unable advise ATC.



NOTE: Chart not to scale.

## DEPARTURE ROUTE DESCRIPTION

TAKEOFF RUNWAY 3: Climb on heading 049° to 2700 before turning left, then on heading assigned by ATC, thence...

TAKEOFF RUNWAY 21: Climb on heading 214° to 1600 before proceeding north, then on heading assigned by ATC, thence...

...on RADAR vectors to UGANG, then on track 196° to BEAVY. Then on assigned transition. Maintain 3000, expect clearance to filed altitude within 10 minutes after departure.

GANDT TRANSITION (BEAVY6.GANDT)

JENDO TRANSITION (BEAVY6.JENDO)

# BEAVY SIX DEPARTURE (RNAV)

(BEAVY6.BEAVY) 21MAR24

GASTONIA, NORTH CAROLINA  
GASTONIA MUNI (AKH)

SE-2, 31 OCT 2024 to 28 NOV 2024

SE-2, 31 OCT 2024 to 28 NOV 2024