

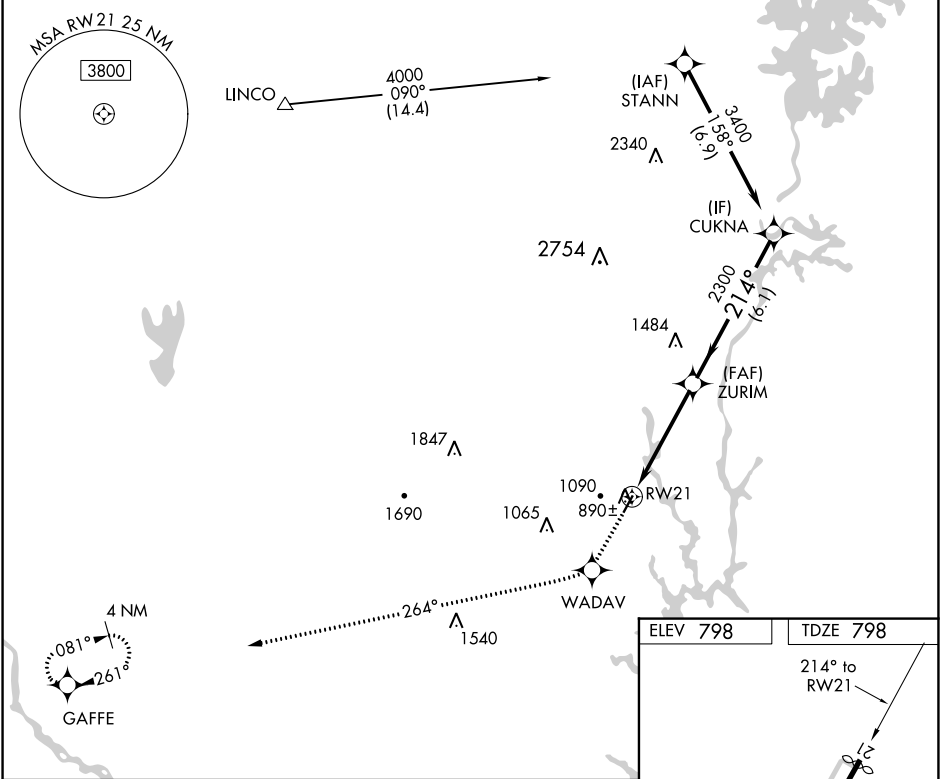
WAAS CH <b>50402</b> <b>W21A</b>	APP CRS <b>214°</b>	Rwy Idg TDZE Apt Elev	<b>3688</b> <b>798</b> <b>798</b>
--	------------------------	-----------------------------	---

# RNAV (GPS) RWY 21

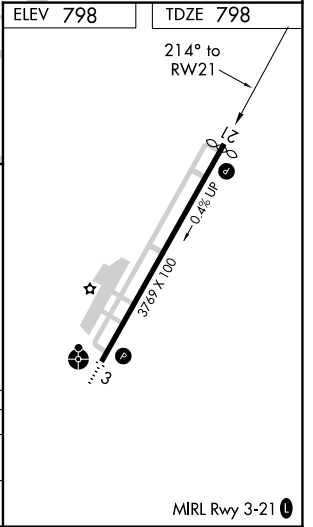
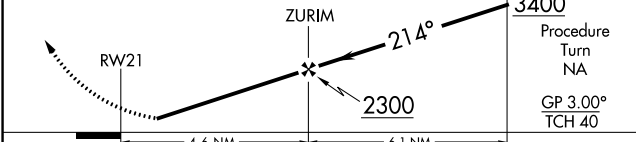
GASTONIA MUNI (AKH)

RNP APCH.		MISSED APPROACH: Climb to 3200 direct WADAV and via 264° track to GAFFE and hold.	
<p>▼ If local altimeter setting not received, use Charlotte/Douglas Intl altimeter setting and increase all DA/MDAs 40 feet. Rwy 21 helicopter visibility reduction below ¾ SM NA.</p>			

ASOS <b>135.725</b>	CHARLOTTE APP CON <b>120.05 257.2</b>	CLNC DEL <b>127.2</b>	UNICOM <b>123.0 (CTAF)</b>
------------------------	--	--------------------------	-------------------------------



3200	WADAV	GAFFE	VGSI and RNAV glidepath not coincident (VGSI Angle 3.00/TCH 38).
		tr 264°	



CATEGORY	A	B	C	D
LPV DA	1111-1¼	313 (400-1¼)		NA
LNAV MDA	1420-1	622 (700-1)	1420-1¾ 622 (700-1¾)	NA

SE-2, 31 OCT 2024 to 28 NOV 2024

SE-2, 31 OCT 2024 to 28 NOV 2024