

WAAS CH <b>49140</b> <b>W35A</b>	APP CRS <b>354°</b>	Rwy Idg TDZE <b>112</b> Apt Elev <b>112</b>	<b>6006</b>
--	------------------------	---	-------------

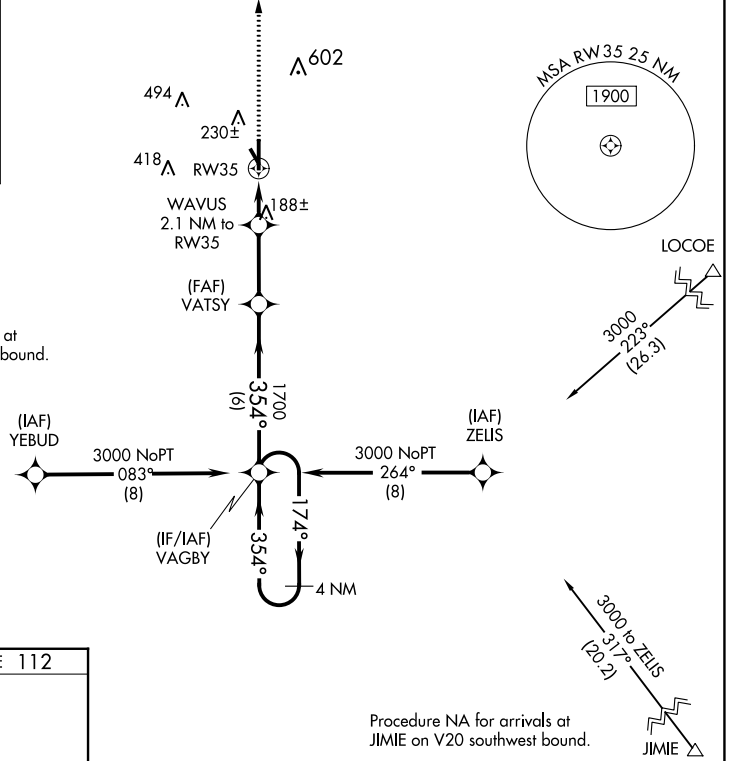
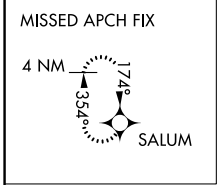
# RNAV (GPS) RWY 35

BROOKS COUNTY (BKS)

**⚠** For uncompensated Baro-VNAV systems, LNAV/VNAV NA below -15°C (5°F) or above 54°C (130°F). Circling Rwy 14 NA at night. DME/DME RNP-0.3 NA.

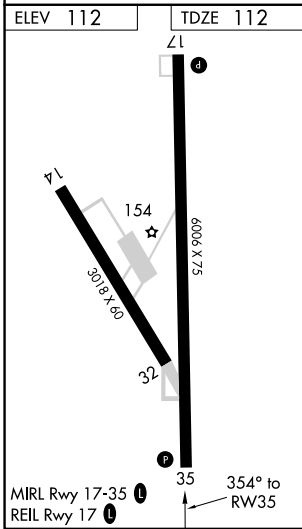
MISSED APPROACH: Climb to 3000 direct SALUM and hold.

AWOS-3PT <b>118.125</b>	KINGSVILLE APP CON * <b>119.9 290.45</b>	UNICOM <b>122.8</b> (CTAF) <b>0</b>
----------------------------	---	--



SC-3, 31 OCT 2024 to 28 NOV 2024

SC-3, 31 OCT 2024 to 28 NOV 2024



3000	SALUM	WAVUS 2.1 NM to RW35	VATSY 1700	VAGBY	4 NM Holding Pattern
*LNAV only - 0.9 NM to RW35		*820	354°	174°	3000
RW35		0.9	1.2	2.8 NM	6 NM
GP 3.00°	TCH 45				
CATEGORY	A	B	C	D	
LPV DA	362-1		250 (300-1)		
LNAV/VNAV DA	362-1		250 (300-1)		
LNAV MDA	440-1		328 (400-1)		
<b>CIRCLING</b>	580-1 468 (500-1)	680-1 568 (600-1)	940-2½ 828 (900-2½)	940-2¾ 828 (900-2¾)	