

WAAS CH <b>77882</b> <b>W16A</b>	APP CRS <b>155°</b>	Rwy Idg TDZE Apt Elev	<b>5310</b> <b>689</b> <b>689</b>
--	------------------------	-----------------------------	---

# RNAV (GPS) RWY 16

ABERNATHY FLD (GZS)

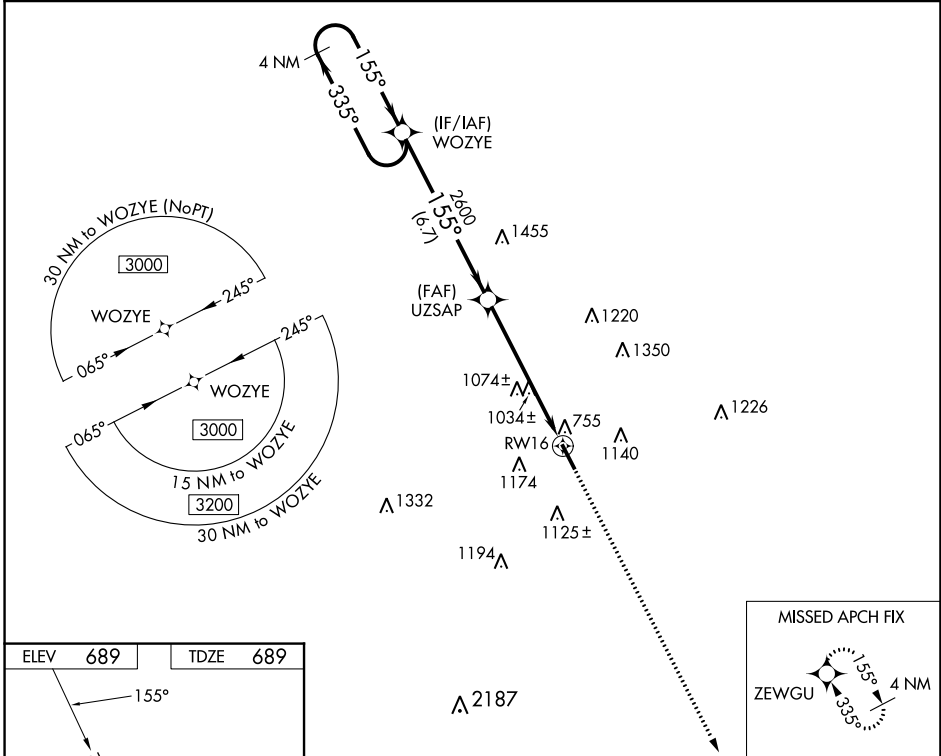
RNP APCH - GPS.

**▼** Procedure NA at night. Helicopter visibility reduction below 1 SM NA. When local altimeter setting not received, use Huntsville Exec Tom Sharp Jr Fld altimeter setting: increase all MDA 100 feet and visibility LP and LNAV Cats C/D 1/8 SM and Circling Cats A/B 1/4 SM and Cat C 1/2 SM.

**▲ NA**

**MISSED APPROACH:**  
Climb to 3000 direct ZEWGU and hold.

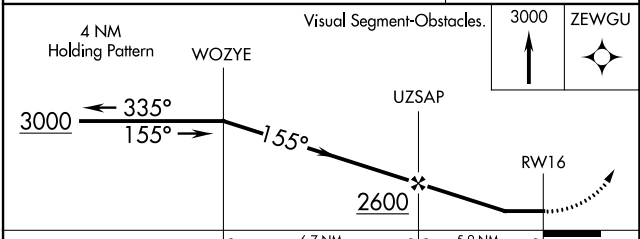
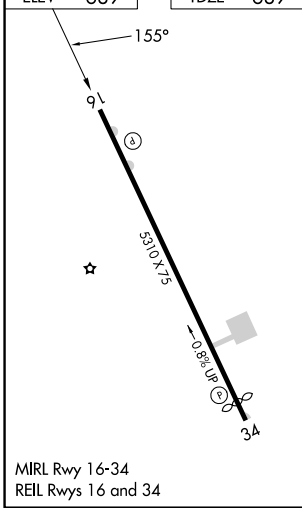
AWOS-3 <b>118.275</b>	MEMPHIS CENTER <b>125.85 379.25</b>	UNICOM <b>122.8 (CTAF)</b>
--------------------------	--	-------------------------------



SE-1, 31 OCT 2024 to 28 NOV 2024

SE-1, 31 OCT 2024 to 28 NOV 2024

ELEV <b>689</b>	TDZE <b>689</b>
-----------------	-----------------



CATEGORY	A	B	C	D
LP MDA	1300-1	611 (700-1)	1300-1 <sup>3</sup> / <sub>4</sub>	611 (700-1 <sup>1</sup> / <sub>4</sub> )
LNAV MDA	1340-1	651 (700-1)	1340-1 <sup>7</sup> / <sub>8</sub>	651 (700-1 <sup>7</sup> / <sub>8</sub> )
CIRCLING	1420-1 731 (800-1)	1480-1 791 (800-1)	1480-2 <sup>1</sup> / <sub>4</sub> 791 (800-2 <sup>1</sup> / <sub>4</sub> )	1640-3 951 (1000-3)