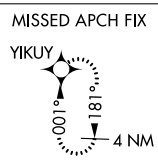
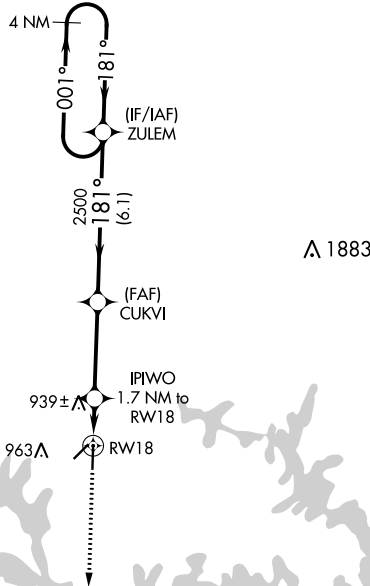
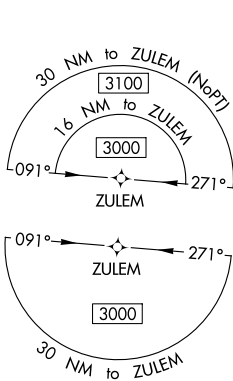


WAAS CH 65637 W18A	APP CRS 181°	Rwy Idg TDZE Apt Elev	5000 810 823
--	------------------------	-----------------------------	---

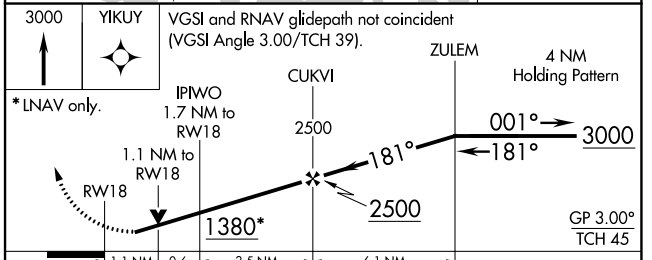
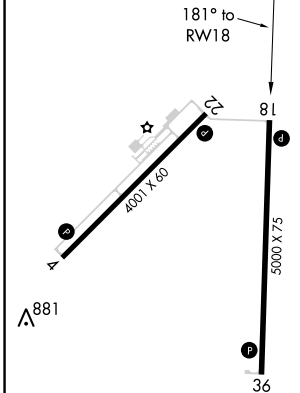
RNAV (GPS) RWY 18

CLINTON RGNL (GLY)

RNP APCH.		MISSED APPROACH: Climb to 3000 direct YIKUY and hold.
⚠ Baro-VNAV NA when using Whiteman AFB altimeter setting. For uncompensated Baro-VNAV systems, LNAV/VNAV NA below -16°C or above 54°C. Circling Rwy 4 NA at night. When local altimeter setting not received, use Whiteman AFB altimeter setting and increase all DA 61 feet and all MDA 80 feet, visibility LNAV Cat C/D ¾ mile, Circling Cat D ¼ mile. Rwy 18 helicopter visibility reduction below ¾ SM NA. VDP NA when using Whiteman AFB altimeter setting.		
AWOS-3PT 120.475	WHITEMAN APP CON ★ 127.45	UNICOM 122.8 (CTAF) 0



ELEV 823	TDZE 810
----------	----------



CATEGORY	A	B	C	D
LPV DA		1060-1	250 (300-1)	
LNAV/VNAV DA		1060-1	250 (300-1)	
LNAV MDA		1200-1	390 (400-1)	
C CIRCLING	1280-1 457 (500-1)	1300-1 477 (500-1)	1340-1½ 517 (600-1½)	1480-2 657 (700-2)

MIRL Rwy 4-22 and 18-36
REIL Rwy 4, 18, 22 and 36

NC-3, 31 OCT 2024 to 28 NOV 2024

NC-3, 31 OCT 2024 to 28 NOV 2024