

WAAS CH <b>82235</b> <b>W36A</b>	APP CRS <b>001°</b>	Rwy Idg TDZE Apt Elev	<b>5000</b> <b>804</b> <b>823</b>
--	------------------------	-----------------------------	---

# RNAV (GPS) RWY 36

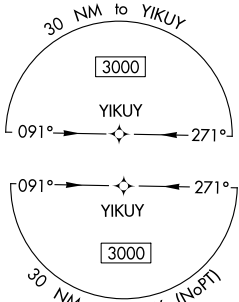
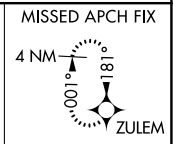
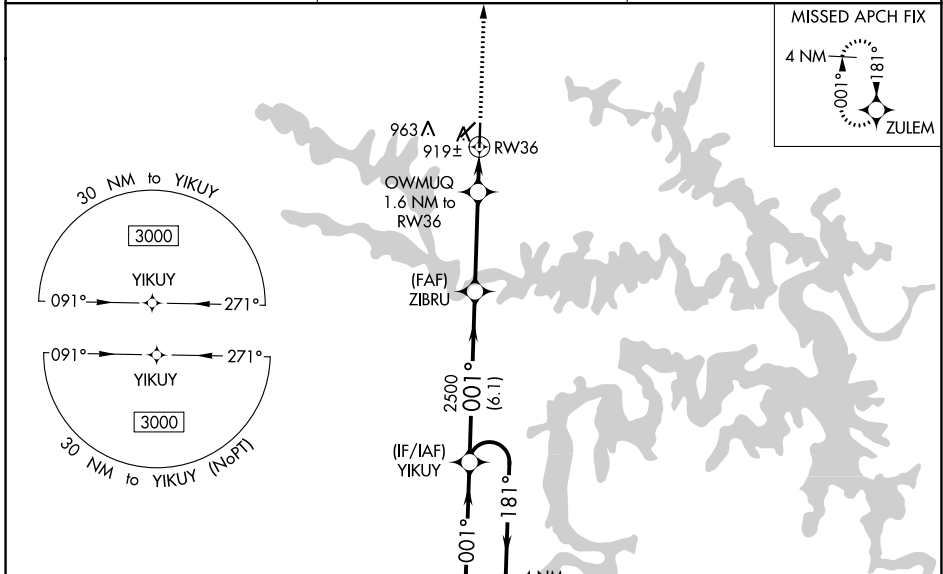
CLINTON RGNL (GLY)

RNP APCH.

**⚠** Baro-VNAV NA when using Whiteman AFB altimeter setting. For uncompensated Baro-VNAV systems, LNAV/VNAV NA below -16°C or above 54°C. Circling Rwy 4 NA at night. When local altimeter setting not received, use Whiteman AFB altimeter setting and increase all DA 61 feet and all MDA 80 feet, increase visibility LNAV Cats C/D 3/8 mile, LNAV/VNAV all Cats and Circling Cat D 1/4 mile. VDP NA with Whiteman AFB altimeter setting.

**MISSED APPROACH:**  
Climb to 3000 direct ZULEM and hold.

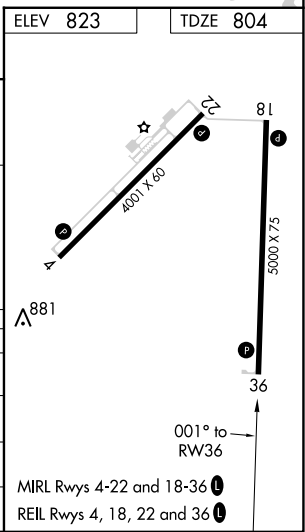
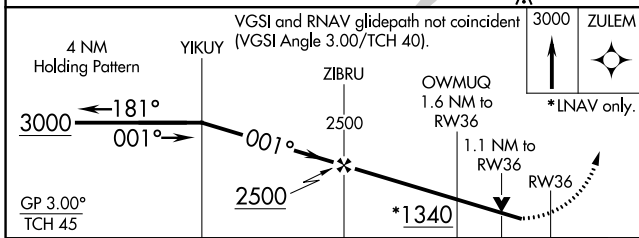
AWOS-3PT <b>120.475</b>	WHITEMAN APP CON ★ <b>127.45</b>	UNICOM <b>122.8 (CTAF)</b>
----------------------------	-------------------------------------	-------------------------------



NC-3, 31 OCT 2024 to 28 NOV 2024

NC-3, 31 OCT 2024 to 28 NOV 2024

ELEV 823	TDZE 804
----------	----------



CATEGORY	A	B	C	D
LPV DA	1054-1 250 (300-1)			
LNAV/VNAV DA	1101-1 297 (300-1)			
LNAV MDA	1260-1 456 (500-1)	1260-1 3/8 456 (500-1 3/8)		
<b>C</b> CIRCLING	1280-1 457 (500-1)	1300-1 477 (500-1)	1340-1 1/2 517 (600-1 1/2)	1480-2 657 (700-2)