

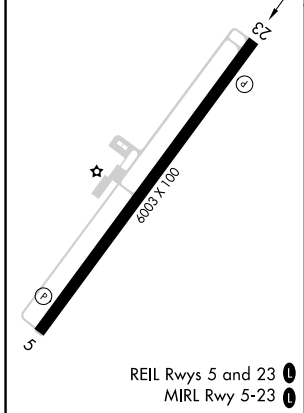
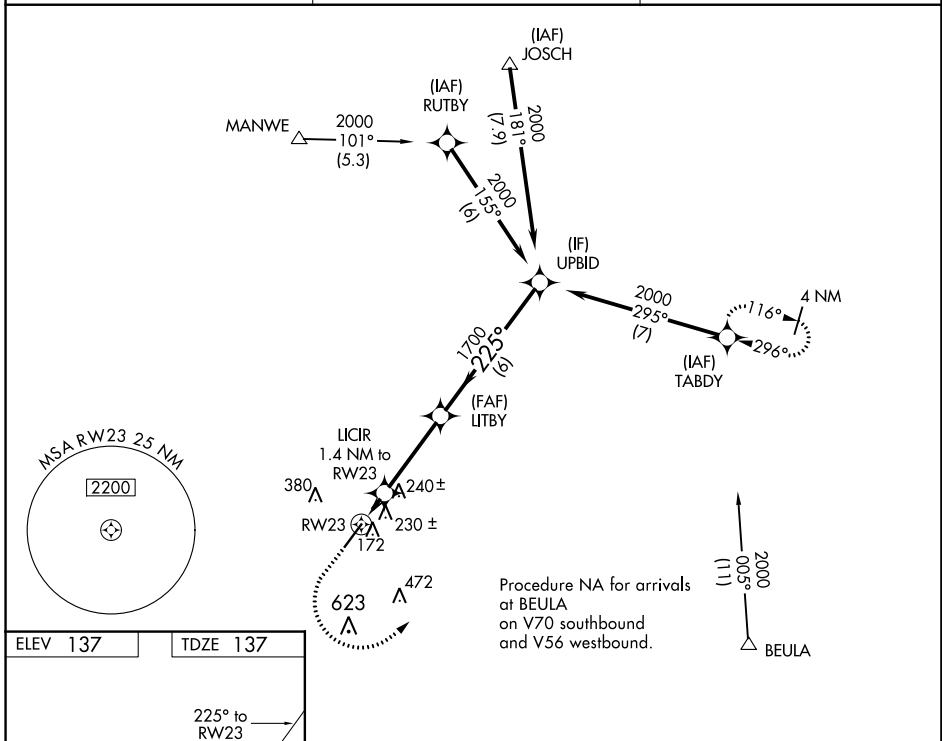
WAAS CH 69521 W23A	APP CRS 225°	Rwy Idg TDZE Apt Elev	6003 137 137
--	------------------------	-----------------------------	---

RNAV (GPS) RWY 23

DUPLIN COUNTY (DPL)

RNP APCH.	MISSED APPROACH: Climb to 1000 then climbing left turn to 2000 direct TABDY and hold.
<p>⚠ For uncompensated Baro-VNAV systems, LNAV/VNAV NA below -15°C or above 54°C.</p>	

AWOS-3 120.675	SEYMOUR JOHNSON APP CON★ 119.7 273.6	UNICOM 123.0 (CTAF) ①
--------------------------	--	---------------------------------



	1000	2000	TABDY	
*LNAV only.				
	RWY 23	LICIR 1.4 NM to RWY 23	LITBY 1700	UPBID 2000
		*620	1700	225°
	-1.4 NM	3.4 NM	6 NM	
CATEGORY	A	B	C	D
LPV DA	DA	337- ³ / ₄	200 (200- ³ / ₄)	
LNAV/VNAV DA	DA	407- ⁷ / ₈	270 (300- ⁷ / ₈)	
LNAV MDA		480-1	343 (400-1)	

GP 3.00°
TCH 43

SE-2, 31 OCT 2024 to 28 NOV 2024

SE-2, 31 OCT 2024 to 28 NOV 2024