

APP CRS	Rwy Idg	<b>2812</b>
<b>218°</b>	TDZE	<b>538</b>
	Apt Elev	<b>538</b>

# RNAV (GPS) RWY 22

MALVERN MUNI (M78)

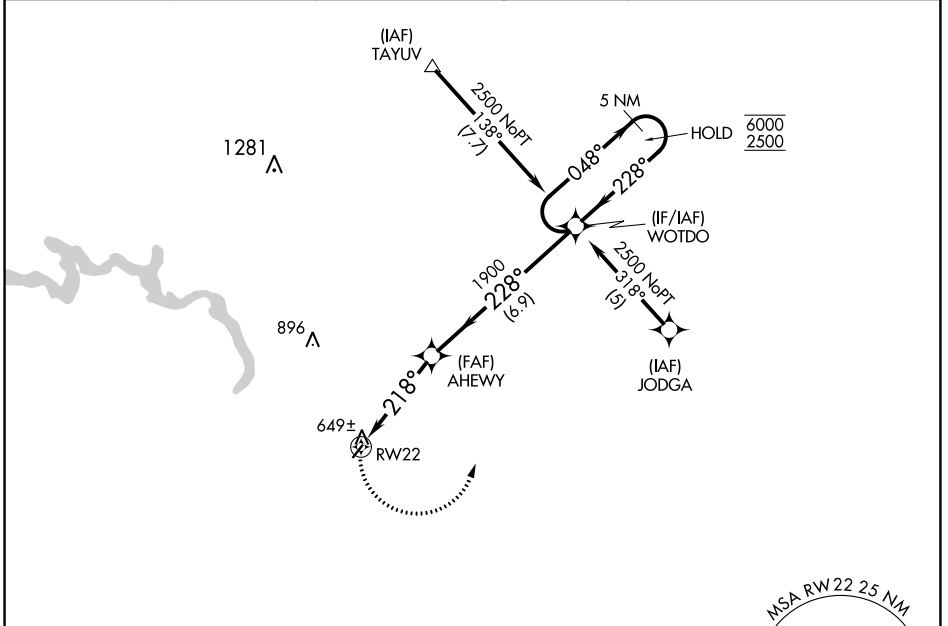
RNP APCH - GPS.

**▼** Rwy 22 helicopter visibility reduction below 1 SM NA. Use Hot Springs altimeter setting; when not received use Bill and Hillary Clinton Nil/Adams Fld altimeter setting and increase all MDAs 80 feet. Procedure NA at night.

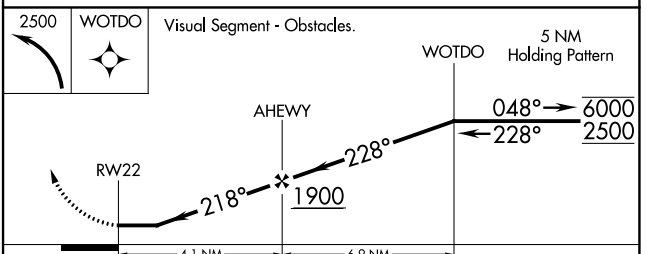
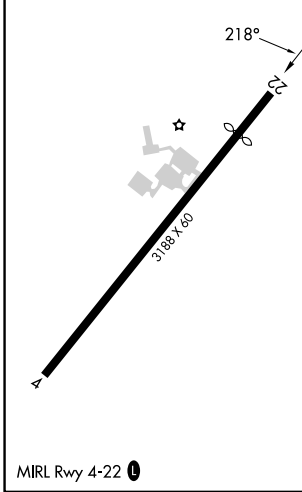
**▲ NA**

MISSED APPROACH: Climbing left turn to 2500 direct WOTDO and hold.

HOT ASOS <b>119.925</b>	MEMPHIS CENTER <b>128.475 377.15</b>	UNICOM <b>122.8(CTAF) 0</b>
----------------------------	---	--------------------------------



ELEV 538	TDZE 538
----------	----------



CATEGORY	A	B	C	D
LNAV MDA	960-1	422 (500-1)	NA	
CIRCLING	1000-1 462 (500-1)	1080-1 542 (600-1)	NA	

SC-1, 31 OCT 2024 to 28 NOV 2024

SC-1, 31 OCT 2024 to 28 NOV 2024