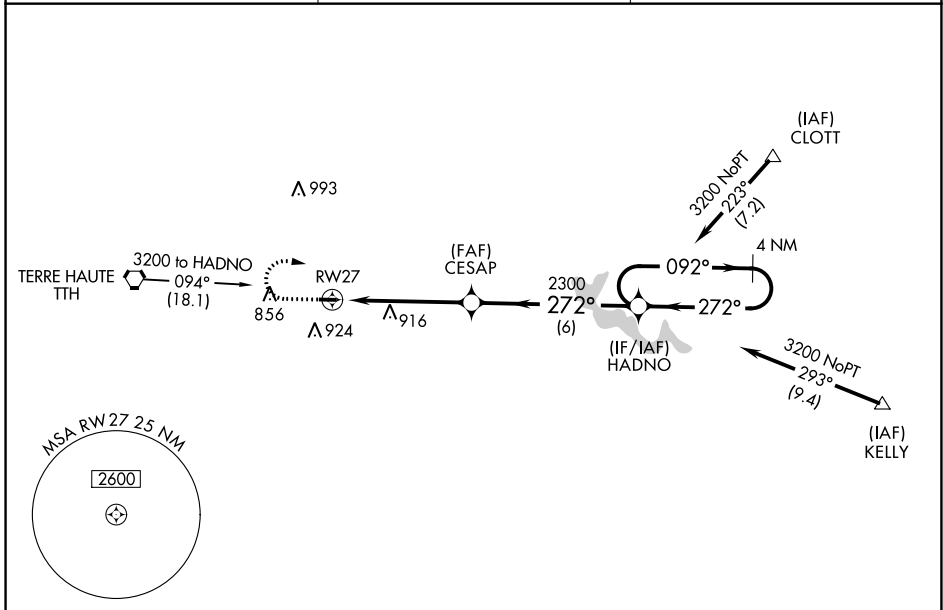


APP CRS 272°	Rwy Idg TDZE Apt Elev	2499 645 645
------------------------	-----------------------------	---

RNAV (GPS) RWY 27

BRAZIL CLAY COUNTY (ØI2)

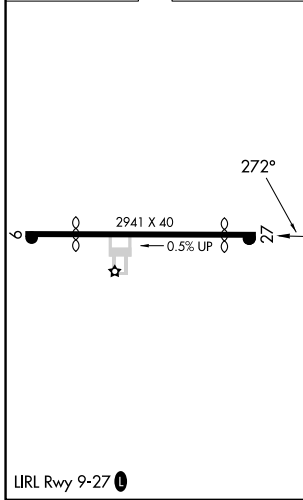
RNP APCH - GPS.		MISSED APPROACH: Climb to 2300 then dimbing right turn to 3200 direct HADNO and hold.
▼ Use HUF altimeter setting. Procedure NA at night. ▲ NA Helicopter visibility reduction below 1 SM NA.		
HUF ASOS 127.5	HULMAN APP CON 125.45 339.8	UNICOM 122.8 (CTAF) 0



EC-2, 31 OCT 2024 to 28 NOV 2024

EC-2, 31 OCT 2024 to 28 NOV 2024

ELEV 645	TDZE 645
----------	----------



▲1339			
2300	3200	HADNO	4 NM Holding Pattern
↑ CESAP ↘ RWY 27 ↗ 2300 ↘ 272°		HADNO ↗ 092° ↖ 272° 3200	
5 NM		6 NM	
CATEGORY	A	B	C D
LNAV MDA	1240-1 595 (600-1)	NA	
CIRCLING	1240-1 595 (600-1)	NA	