

APP CRS	Rwy Idg	3002
087°	TDZE	146
	Apt Elev	146

RNAV (GPS) RWY 9

DAVID G JOYCE (ØR5)

RNP APCH - GPS.

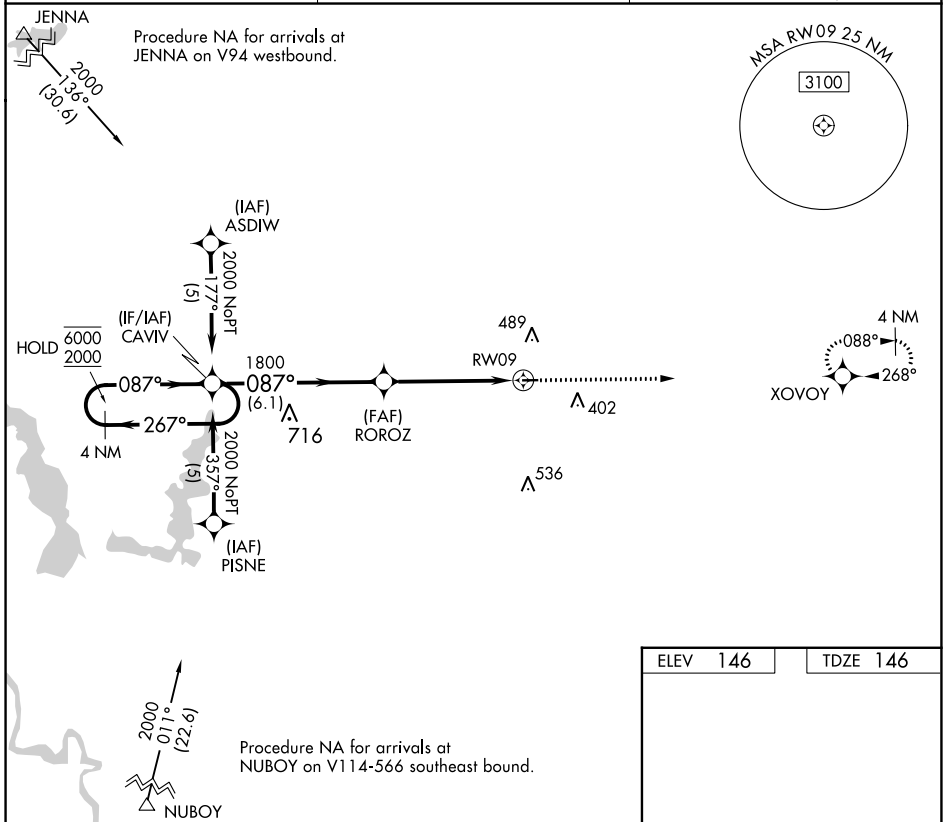
NA Procedure NA at night. Rwy 9 helicopter visibility reduction below 1 SM NA. Use Alexandria Intl altimeter setting, when not received use Esler Rgnl altimeter setting.

MISSED APPROACH: Climb to 2000 direct XOVOY and hold.

AEX ASOS
123.975

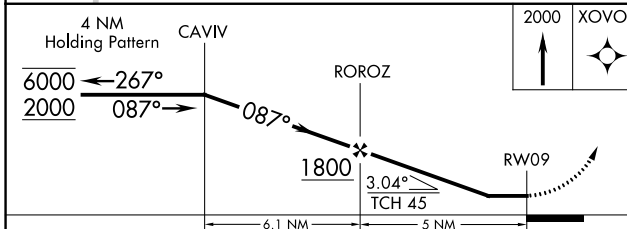
POLK APP CON
125.4 302.2

UNICOM
122.7 (CTAF) 0



SC-4, 31 OCT 2024 to 28 NOV 2024

SC-4, 31 OCT 2024 to 28 NOV 2024



ELEV	146	TDZE	146
MIRL Rwy 9-27 0			
REIL Rwy 9 and 27 0			

CATEGORY	A	B	C	D
LNAV MDA	780-1	634 (700-1)		NA
CIRCLING	780-1 634 (700-1)	900-1 754 (800-1)		NA