

APP CRS	Rwy Idg	N/A
044°	TDZE	N/A
	Apt Elev	157

RNAV (GPS)-B

FIREBAUGH (F34)

RNP APCH.

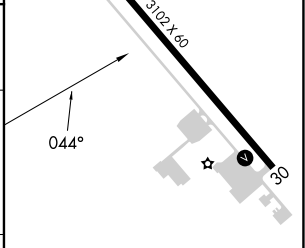
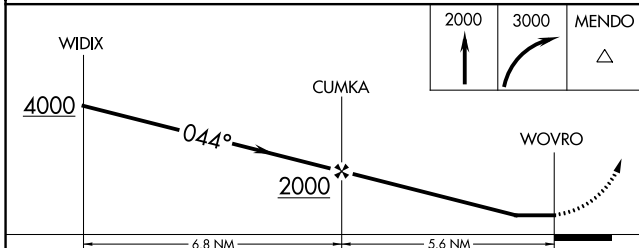
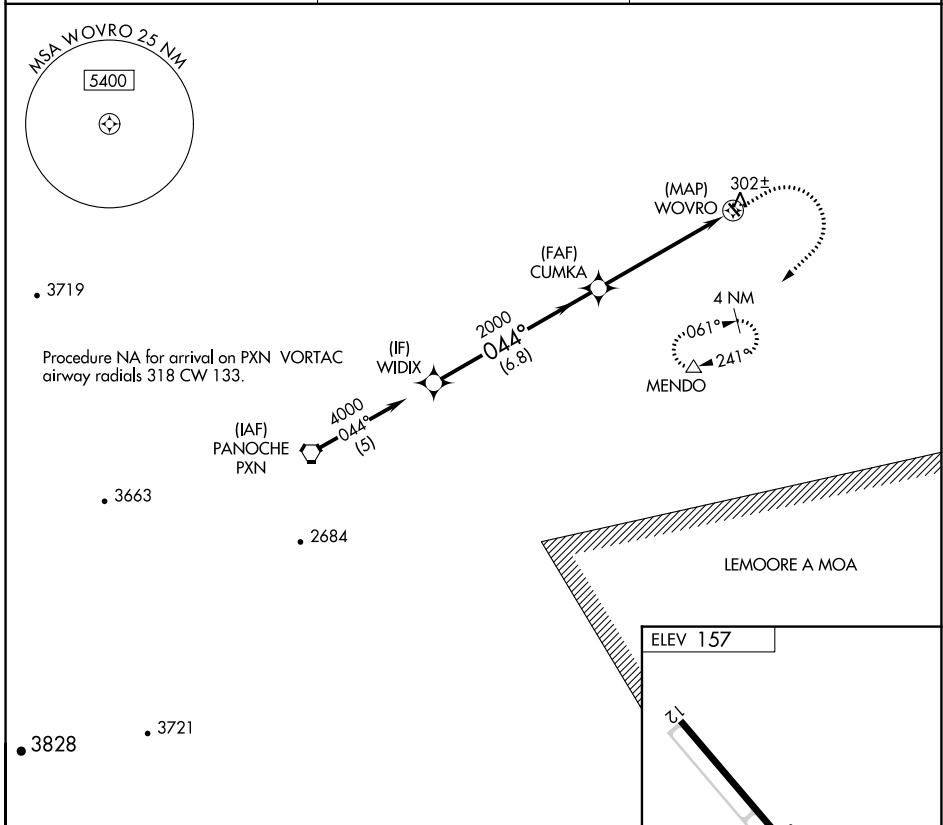
NA Procedure NA at night. Use Madera altimeter setting, when not received, use Merced Yosemite Rgnl altimeter setting.

MISSED APPROACH: Climb to 2000 then climbing right turn to 3000 direct MENDO and hold.

MAE ASOS
134.725

NORCAL APP CON
120.95 269.45

CTAF
122.9



CATEGORY	A	B	C	D
CIRCLING	740-1	583 (600-1)	NA	

MIRL Rwy 12-30

SW-2, 31 OCT 2024 to 28 NOV 2024

SW-2, 31 OCT 2024 to 28 NOV 2024