
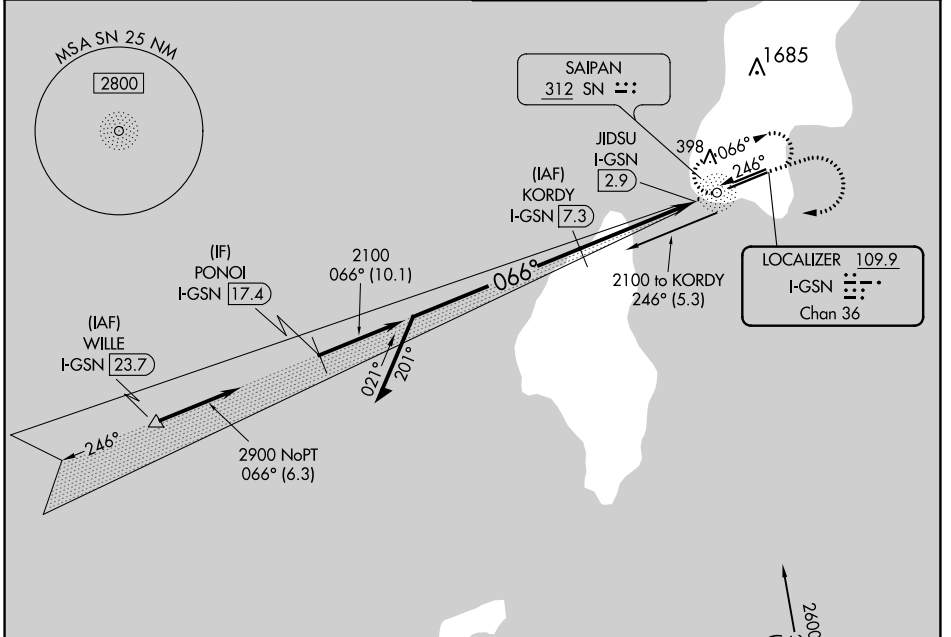


LOC/DME I-GSN <b>109.9</b> Chan <b>36</b>	APP CRS <b>066°</b>	Rwy Idg <b>8010</b> TDZE <b>215</b> Apt Elev <b>215</b>
---	------------------------	---

ILS or LOC RWY 7  
FRANCISCO C ADA/SAIPAN INTL (GSN)(PGSN)

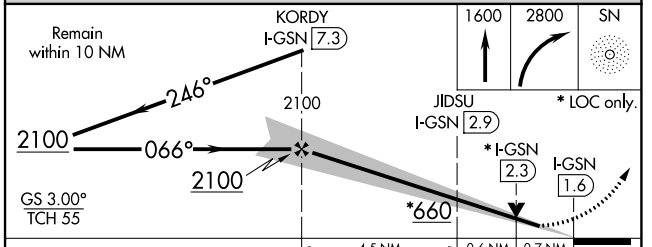
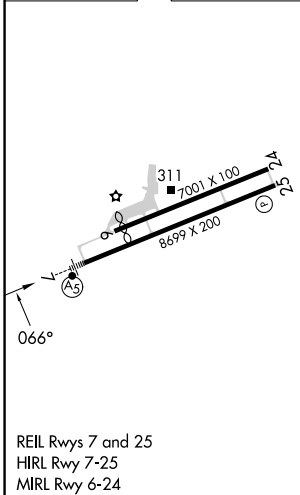
<b>NA</b> Circling NA north of Rwy 6-24. ADF and DME required.	MALSR 	MISSED APPROACH: Climb to 1600 then climbing right turn to 2800 direct SN NDB and hold.
---	--	---

ATIS <b>127.2</b>	GUAM CERAP <b>118.4 290.5</b>	SAIPAN TOWER <b>125.7 256.9</b>	GND CON <b>121.8</b>
----------------------	----------------------------------	------------------------------------	-------------------------



ELEV 215	<b>D</b>	TDZE 215
----------	----------	----------

DME REQUIRED



CATEGORY	A	B	C	D
S-ILS 7		415-1/2	200 (200-1/2)	
S-LOC 7		480-1/2	265 (300-1/2)	
<b>C</b> CIRCLING	720-1	505 (600-1)	720-1 1/2 505 (600-1 1/2)	780-2 565 (600-2)