

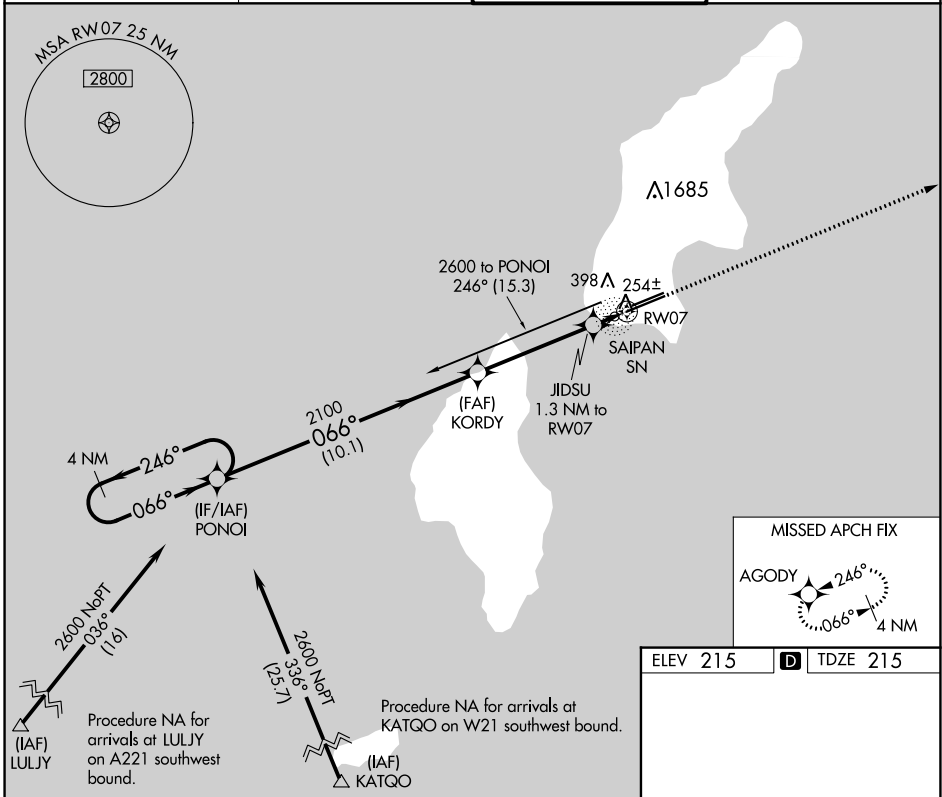
APP CRS	Rwy Idg	8010
066°	TDZE	215
	Apt Elev	215

RNAV (GPS) RWY 7

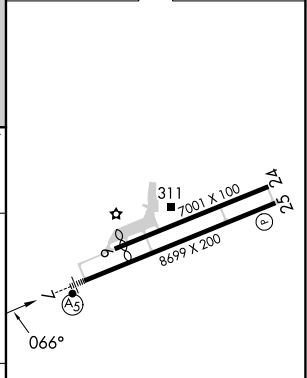
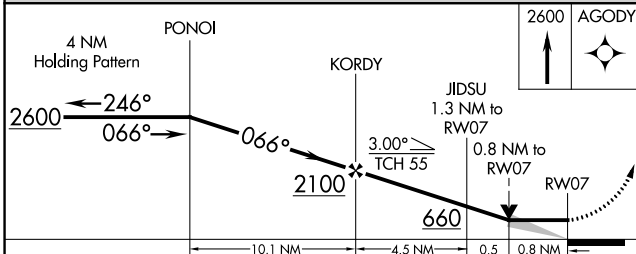
FRANCISCO C ADA/SAIPAN INTL (G5N)(PG5N)

	Circling NA north of Rwy 6-24. DME/DME RNP-0.3 NA.	MISSED APPROACH: Climb 2600 direct AGODY and hold.

ATIS 127.2	GUAM CERAP 118.4 290.5	SAIPAN TOWER 125.7 256.9	GND CON 121.8
----------------------	----------------------------------	------------------------------------	-------------------------



ELEV 215	D TDZE 215
----------	-------------------



CATEGORY	A	B	C	D
LNVA MDA	520-½ 305 (400-½)			
C CIRCLING	720-1	505 (600-1)	720-1½ 505 (600-1½)	780-2 565 (600-2)

REIL Rwy 7 and 25
 HIRL Rwy 7-25
 MIRL Rwy 6-24

PAC, 31 OCT 2024 to 26 DEC 2024

PAC, 31 OCT 2024 to 26 DEC 2024