

VOR/DME FLM <b>117.0</b> Chan <b>117</b>	APP CRS <b>107°</b>	Rwy Idg TDZE Apt Elev <b>913</b>	<b>N/A</b> <b>N/A</b> <b>913</b>
--	------------------------	---	--

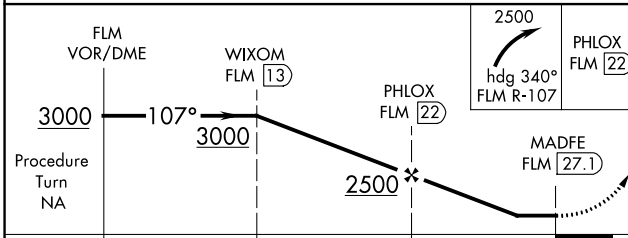
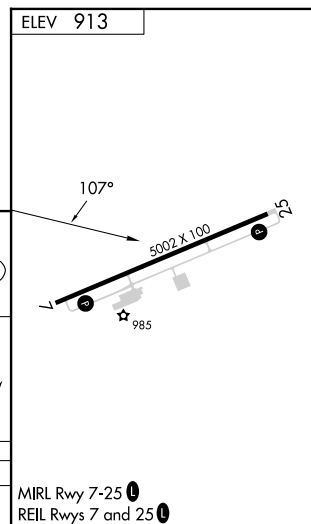
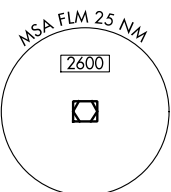
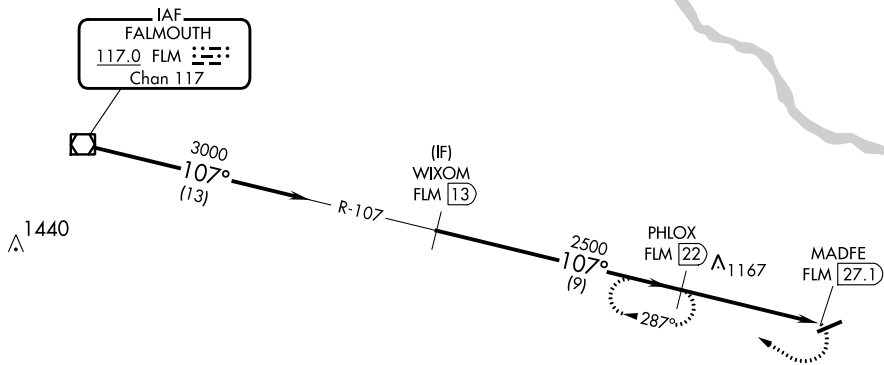
**VOR/DME-A**  
FLEMING-MASON (F/GX)

**NA** When local altimeter setting not received, use Lexington altimeter setting and increase all MDA 140 feet.

MISSED APPROACH: Climbing right turn to 2500 via heading 340° and FLM VOR/DME R-107 to PHLOX/FLM 22 DME and hold.

AWOS-3 <b>118.125</b>	INDIANAPOLIS CENTER <b>124.225 360.725</b>	UNICOM <b>123.0 (CTAF)</b>
--------------------------	---	-------------------------------

Procedure NA for arrivals at FLM VOR/DME via airway radials 094 CW 150.



CATEGORY	A	B	C	D
CIRCLING	1900-1¼ 987 (1000-1¼)	1900-1½ 987 (1000-1½)	1900-3	987 (1000-3)

MIRL Rwy 7-25  
REIL Rwys 7 and 25

SE-1, 31 OCT 2024 to 28 NOV 2024

SE-1, 31 OCT 2024 to 28 NOV 2024