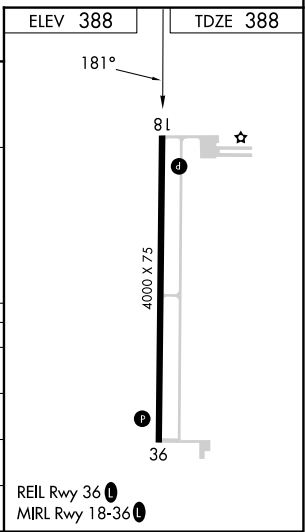
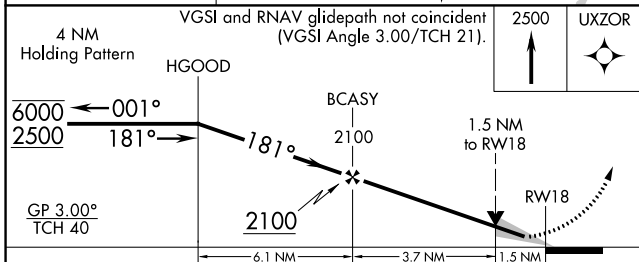
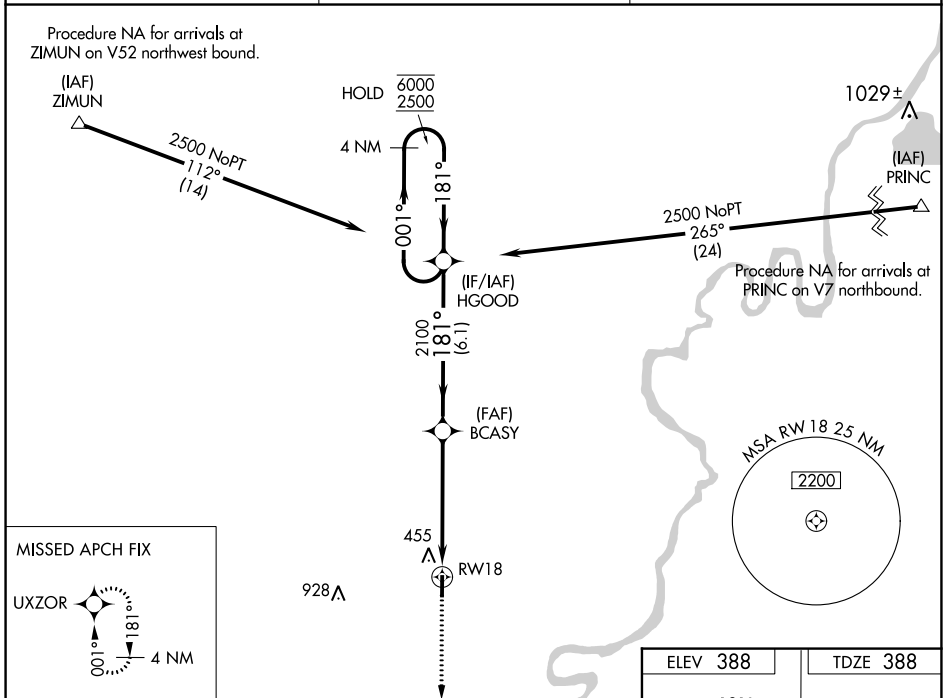


WAAS CH 56343 W18A	APP CRS 181°	Rwy Idg TDZE Apt Elev	4000 388 388
--	------------------------	-----------------------------	---

RNAV (GPS) RWY 18

CARMI MUNI (CUL)

RNP APCH - GPS.		MISSED APPROACH: Climb to 2500 direct UXZOR and hold.
<p>▽ For uncompensated Baro-VNAV systems, LNAV/VNAV NA △ below -19°C or above 54°C.</p>		
AWOS-3 118.425	EVANSVILLE APP CON ★ 127.35 343.7	UNICOM 122.8 (CTAF) 0



CATEGORY	A	B	C	D
LPV DA	638- ³ / ₄ 250 (300- ³ / ₄)			NA
LNAV/VNAV DA	679- ⁷ / ₈ 291 (300- ⁷ / ₈)			NA
LNAV MDA	900-1 512 (600-1)		900-1 ³ / ₈ 512 (600-1 ³ / ₈)	NA
C CIRCLING	900-1 512 (600-1)		1000-1 ³ / ₄ 612 (700-1 ³ / ₄)	NA

EC-3, 31 OCT 2024 to 28 NOV 2024

EC-3, 31 OCT 2024 to 28 NOV 2024