

APP CRS	Rwy Idg	<b>5101</b>
<b>297°</b>	TDZE	<b>4148</b>
	Apt Elev	<b>4148</b>

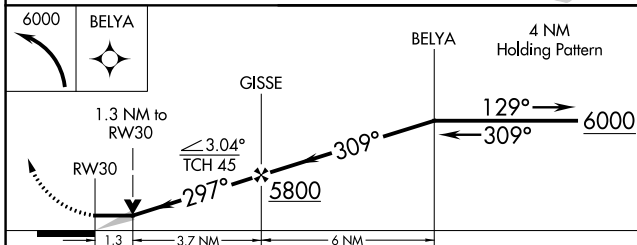
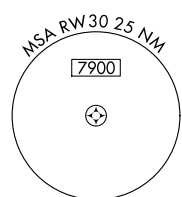
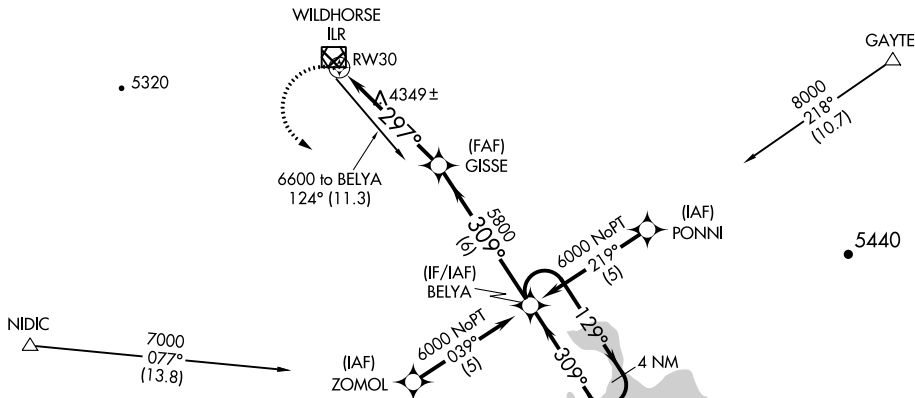
# RNAV (GPS) RWY 30

BURNS MUNI (BNO)

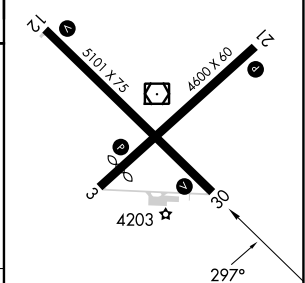
RNP APCH - GPS.	MISSED APPROACH: Climbing left turn to 6000 direct BELYA and hold.
-----------------	--

ASOS <b>135.575</b>	SALT LAKE CENTER <b>128.05 306.95</b>	UNICOM <b>122.8 (CTAF)</b>
------------------------	--	-------------------------------

Procedure NA for arrivals on ILR VOR/DME airway radial 123.



ELEV 4148	TDZE 4148
-----------	-----------



CATEGORY	A	B	C	D
LNVA MDA	4600-1	452 (500-1)	4600-1 $\frac{3}{8}$	452 (500-1 $\frac{1}{8}$ )
CIRCLING	4680-1 532 (600-1)	4720-1 572 (600-1)	4740-1 $\frac{1}{2}$ 592 (600-1 $\frac{1}{2}$ )	5000-2 $\frac{3}{4}$ 852 (900-2 $\frac{3}{4}$ )

REIL Rwy 3, 12, 21 and 30

MIRL Rwy 3-21 and 12-30

NW-1, 31 OCT 2024 to 28 NOV 2024

NW-1, 31 OCT 2024 to 28 NOV 2024