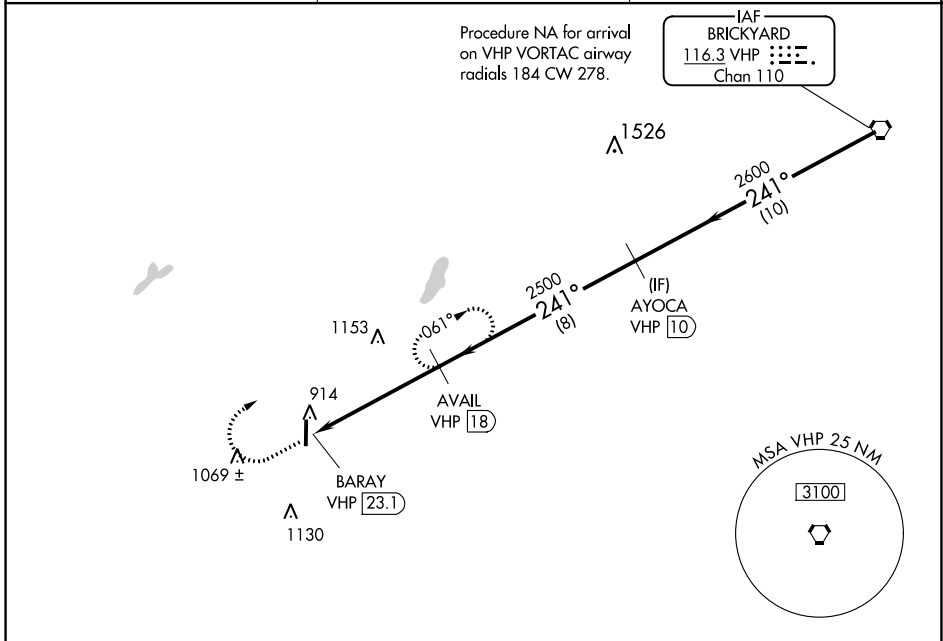


VORTAC VHP 116.3 Chan 110	APP CRS 241°	Rwy Idg TDZE Apt Elev	N/A N/A 842
---	------------------------	-----------------------------	--

VOR-A
PUTNAM COUNTY RGNL (GPC)

<p>▼ DME required.</p>		<p>MISSED APPROACH: Climb to 1700 then climbing right turn to 2500 on VHP VORTAC R-241 to AVAIL/18 DME and hold.</p>	
AWOS-3PT 118.125	INDIANAPOLIS APP CON 119.05 317.8	UNICOM 122.8 (CTAF) 0	



1700	2500	VHP R-241	AVAIL VHP 18	AVAIL VHP 18	AYOCA VHP 10	VHP VORTAC
<p>BARAY VHP 23.1</p>		<p>2500</p>		<p>2600</p>		<p>2600</p>
5.1 NM		8 NM		10 NM		
CATEGORY	A	B	C	D		
C CIRCLING	1420-1	578 (600-1)	1480-1¾ 638 (700-1¾)	1480-2 638 (700-2)		

MIRL Rwy 18-36 0	REIL Rwy 18
-------------------------	-------------

EC-2, 31 OCT 2024 to 28 NOV 2024

EC-2, 31 OCT 2024 to 28 NOV 2024