

APP CRS  
**067°**

Rwy Idg **3002**  
TDZE **15**  
Apt Elev **17**

# RNAV (GPS) RWY 7

BILLY MITCHELL (HSE)



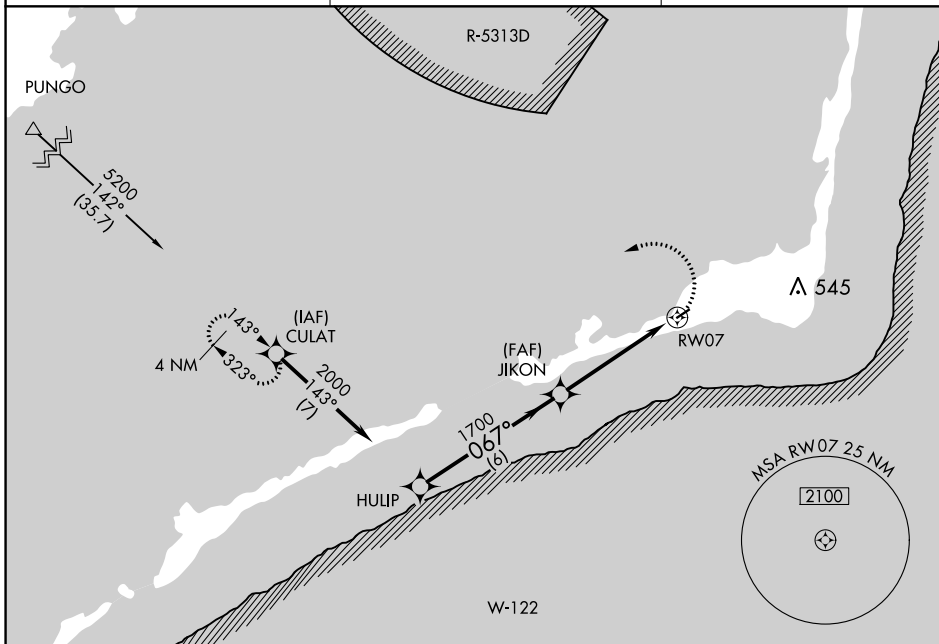
Procedure NA at night.  
GPS or RNP-0.3 required.  
DME/DME RNP-0.3 NA.

MISSED APPROACH: Climbing left turn  
to 6000 direct CULAT WP and hold.

ASOS  
**118.375**

CHERRY POINT APP CON  
**119.75 360.775**

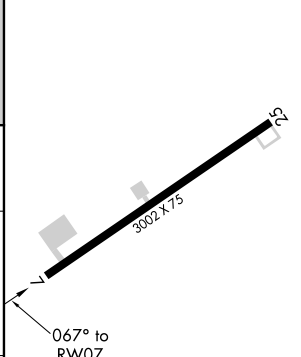
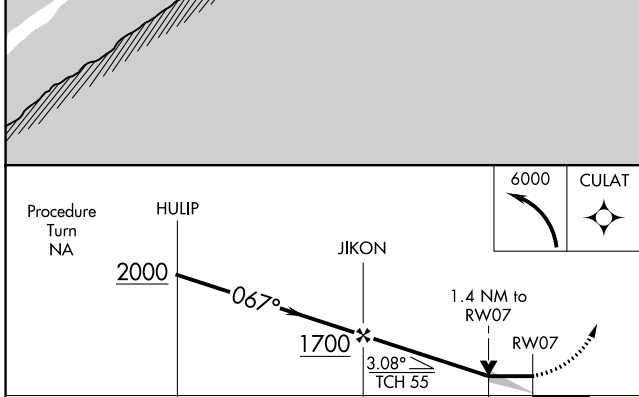
CTAF  
**122.9**



SE-2, 31 OCT 2024 to 28 NOV 2024

SE-2, 31 OCT 2024 to 28 NOV 2024

ELEV 17      TDZE 15



CATEGORY	A	B	C	D
LNVA MDA	500-1	485 (500-1)	500-1¼ 485 (500-1¼)	NA
CIRCLING	560-1	543 (600-1)	560-1½ 543 (600-1½)	NA