

WAAS CH 72626 W05A	APP CRS 047°	Rwy Idg TDZE Apt Elev	4001 12 13
--	------------------------	-----------------------------	---------------------------------------

RNAV (GPS) RWY 5

DARE COUNTY RGNL (MQI)

RNP APCH - GPS.

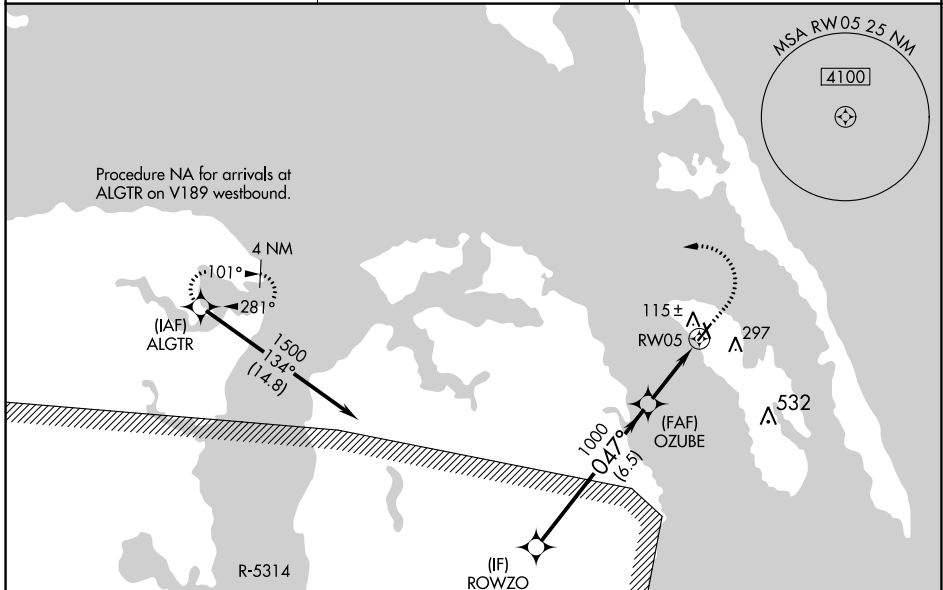
⚠ Circling Rwy 17, 23, 35 NA at night. For uncompensated Baro-VNAV systems, LNAV/VNAV NA below -5°C or above 34°C.

MISSED APPROACH: Climb to 500 then climbing left turn to 3000 direct ALGTR and hold.

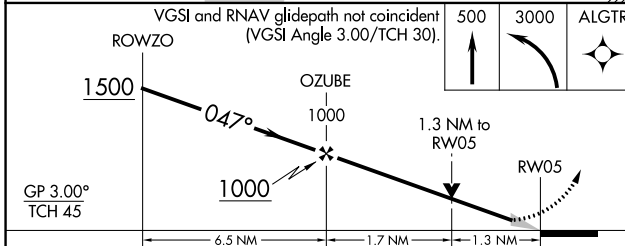
AWOS-3
128.275

CHERRY POINT APP CON
124.725 350.35

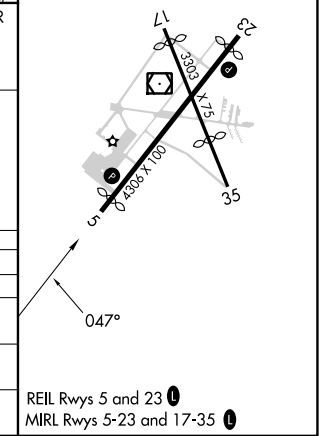
UNICOM
122.8 (CTAF) 0



ELEV 13	TDZE 12
---------	---------



CATEGORY	A	B	C	D
LPV DA	262-3/4	250 (300-3/4)		NA
LNAV/VNAV DA	347-1	335 (400-1)		NA
LNAV MDA	460-1	448 (500-1)	460-1 3/8 448 (500-1 3/8)	NA
C CIRCLING	600-1	587 (600-1)	600-1 1/2 587 (600-1 1/2)	NA



SE-2, 31 OCT 2024 to 28 NOV 2024

SE-2, 31 OCT 2024 to 28 NOV 2024