

APP CRS	Rwy Idg	4504
271°	TDZE	481
	Apt Elev	481

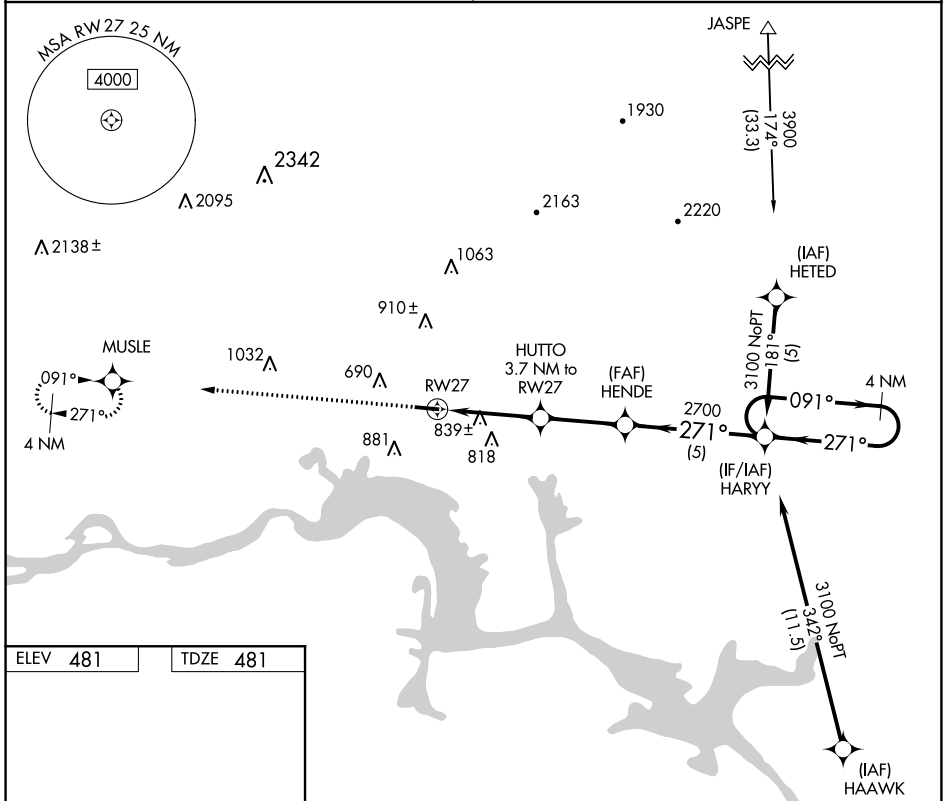
RNAV (GPS) RWY 27

CLARKSVILLE MUNI (H35)

NA Use Russellville Rgnl altimeter setting; if not received, use Fort Smith Rgnl altimeter setting and increase all MDAs 60 feet. DME/DME RNP-0.3 NA. Procedure NA at night. Rwy 27 helicopter visibility reduction below 1 SM NA.

MISSED APPROACH: Climb to 3400 direct MUSLE WP and hold.

MEMPHIS CENTER 128.475 377.15	UNICOM 122.8 (CTAF)
---	-------------------------------



ELEV 481	TDZE 481			
CATEGORY	A	B	C	D
LNAV MDA	1160-1	679 (700-1)	NA	
CIRCLING	1220-1 739 (800-1)	1240-1¼ 759 (800-1¼)	NA	

SC-1, 31 OCT 2024 to 28 NOV 2024

SC-1, 31 OCT 2024 to 28 NOV 2024