

# EL DORADO ONE DEPARTURE

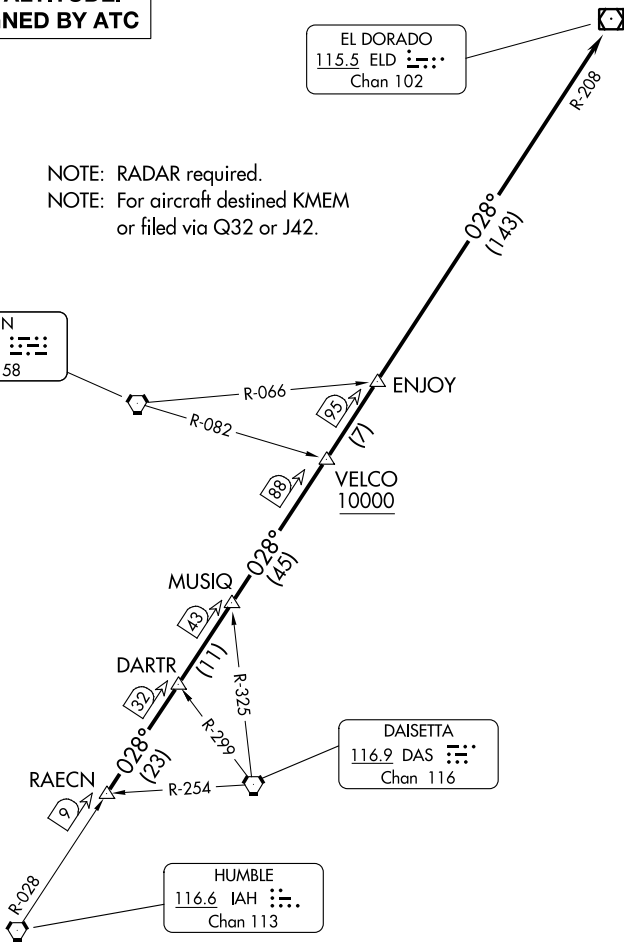
ASOS  
119.925  
CLNC DEL  
125.2  
CTAF  
123.0  
HOUSTON DEP CON  
134.45 284.0

**TOP ALTITUDE:  
ASSIGNED BY ATC**

EL DORADO  
115.5 ELD   
Chan 102

NOTE: RADAR required.  
NOTE: For aircraft destined KMEM  
or filed via Q32 or J42.

LUFKIN  
112.1 LFK   
Chan 58



DAISETTA  
116.9 DAS   
Chan 116

HUMBLE  
116.6 IAH   
Chan 113

**TAKEOFF MINIMUMS**  
Rwys 17, 35: Standard.

NOTE: Chart not to scale.

## DEPARTURE ROUTE DESCRIPTION

**TAKEOFF ALL RUNWAYS:** When entering controlled airspace, climb on assigned heading for RADAR vectors to RAECN INT. Maintain ATC assigned altitude. Expect filed altitude 10 minutes after departure, thence. . . .

. . . . on IAH R-028 and the ELD R-208 to ELD VOR/DME, cross VELCO INT at or above 10000.