

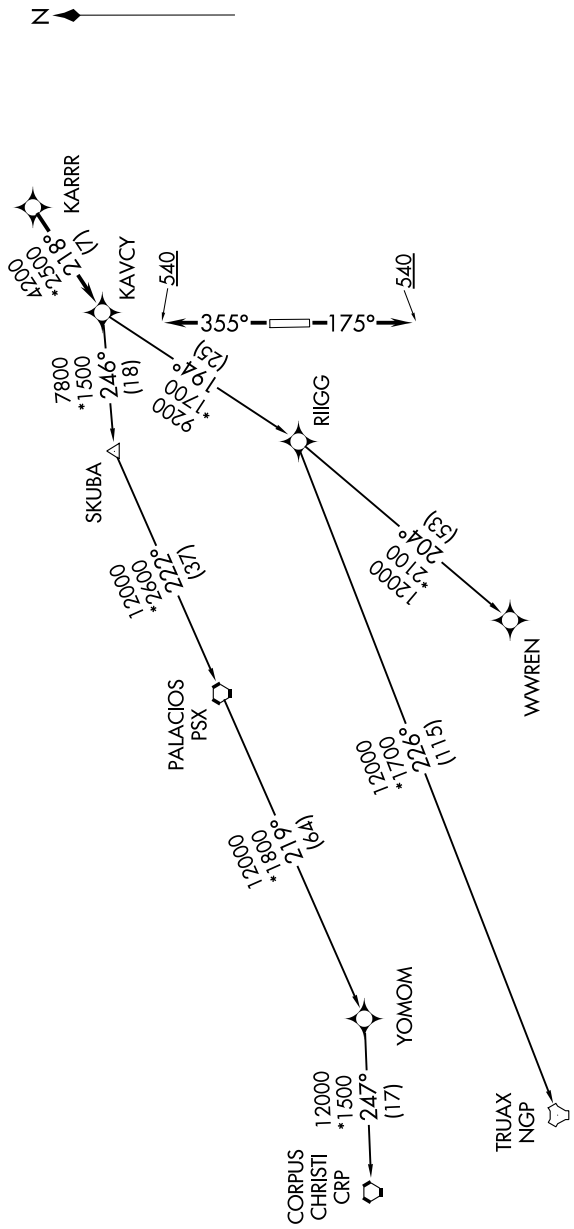
# KARR SEVEN DEPARTURE (RNAV)

**TOP ALTITUDE:  
ASSIGNED BY ATC**

RNAV-1 DME/DME/IRU or GPS.  
RADAR required.

ASOS  
119.925  
CTAF  
123.0  
CLNC DEL  
125.2  
HOUSTON DEP CON  
134.45 284.0

**TAKEOFF MINIMUMS**  
Rwys 17, 35: Standard with minimum climb of 500' per NM to 540.



(NARRATIVE ON FOLLOWING PAGE)

NOTE: Chart not to scale.

SC-5, 31 OCT 2024 to 28 NOV 2024

SC-5, 31 OCT 2024 to 28 NOV 2024

# KARR SEVEN DEPARTURE (RNAV)