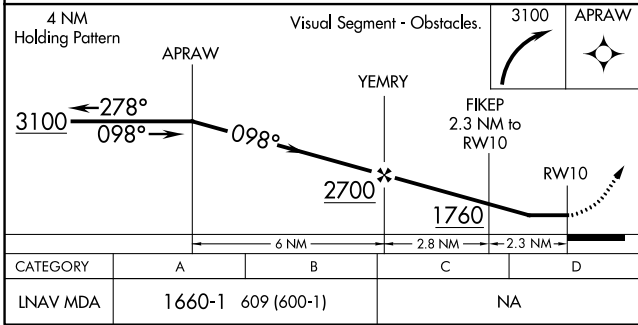
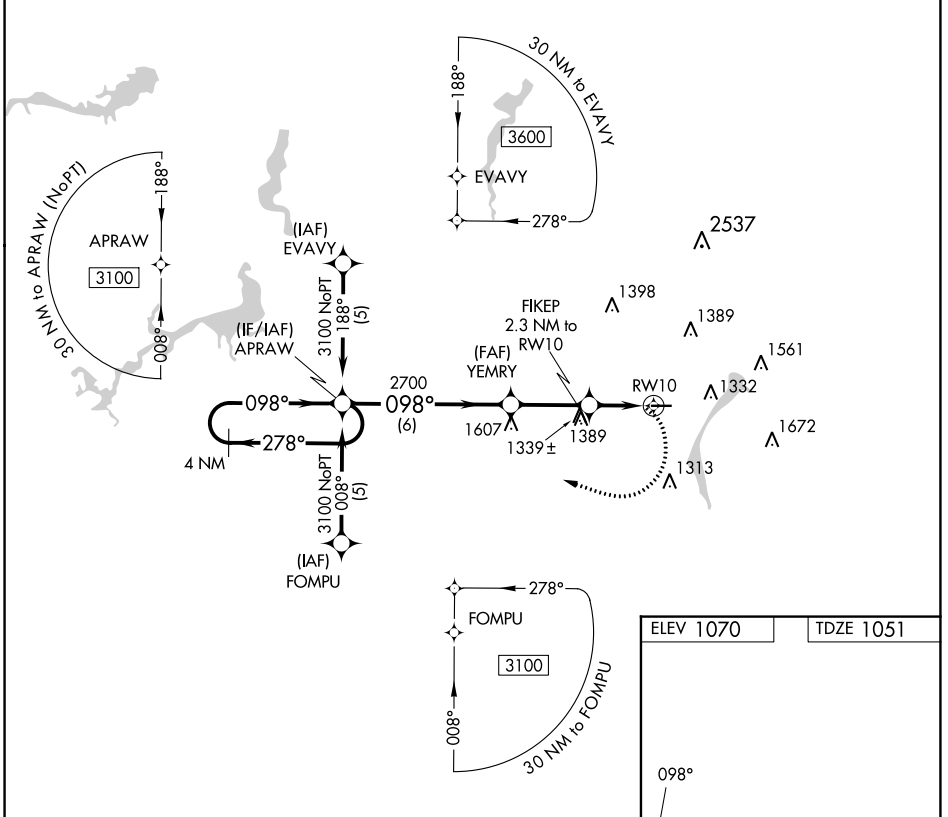


APP CRS	Rwy Idg	3664
098°	TDZE	1051
	Apt Elev	1070

RNAV (GPS) RWY 10

YOUNGSTOWN ELSER METRO (4G4)

RNP APCH.		MISSED APPROACH: Climbing right turn to 3100 direct APRAW and hold.
<p>▽ Rwy 10 helicopter visibility reduction below 1 SM NA. Obtain local altimeter setting on CTAF; when not received, use New Castle altimeter setting and increase all MDA 40 feet. Procedure NA at night.</p> <p>▲ NA</p>		
YOUNGSTOWN APP CON ★	CLNC DEL	UNICOM
133.95 322.3	119.25	123.05 (CTAF)



ELEV 1070	TDZE 1051
-----------	-----------

CATEGORY	A	B	C	D
LNAV MDA	1660-1	609 (600-1)	NA	

MIRL Rwy 10-28
REIL Rwy 10 and 28

EC-2, 31 OCT 2024 to 28 NOV 2024

EC-2, 31 OCT 2024 to 28 NOV 2024