

WAAS CH <b>86917</b> <b>W05A</b>	APP CRS <b>049°</b>	Rwy Idg TDZE Apt Elev	<b>5105</b> <b>24</b> <b>26</b>
--	------------------------	-----------------------------	---------------------------------------

# RNAV (GPS) RWY 5

CAPE FEAR RGNL JETPORT/HOWIE FRANKLIN FLD (SU'T)

RNP APCH - GPS.

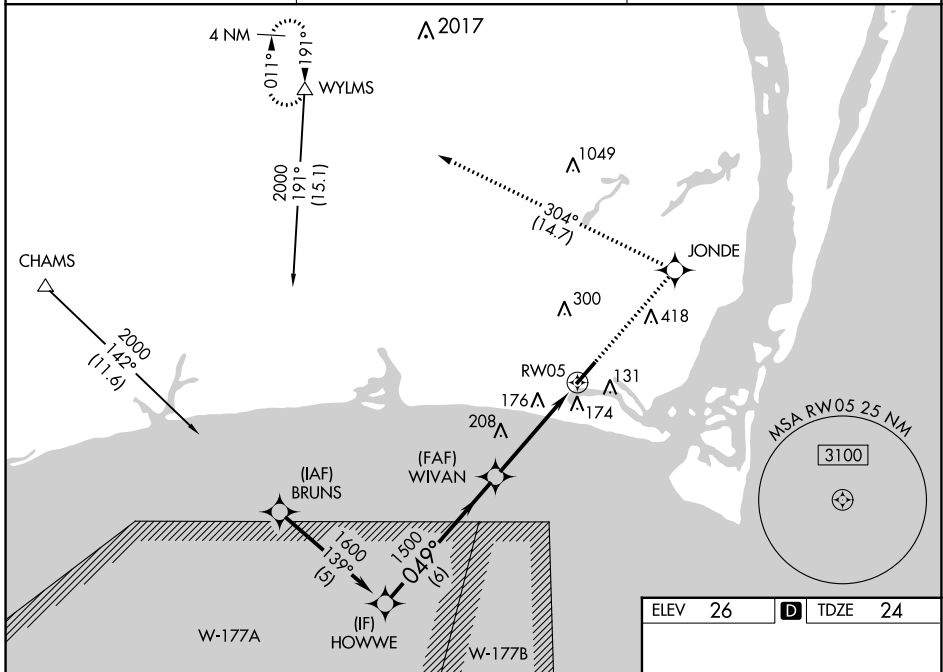
**⚠** Baro-VNAV NA when using Wilmington altimeter setting. For uncompensated Baro-VNAV systems, LNAV/VNAV NA below -15°C or above 54°C. Rwy 5 helicopter visibility reduction below 3/4 SM NA. When local altimeter setting not received, use Wilmington altimeter setting and increase LPV DA to 325 feet, increase LNAV/VNAV DA to 511 feet, increase all MDAs 60 feet and LNAV visibility Cat C 1/8 SM, and Circling visibility Cat C 1/4 SM. VDP NA when using Wilmington altimeter setting.

**MISSED APPROACH:**  
Climb to 3000 direct JONDE and left turn on track 304° to WYLSMS and hold.

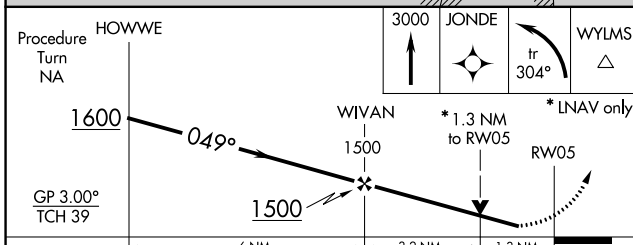
AWOS-3P  
**124.175**

WILMINGTON APP CON \*  
**118.25 284.65**

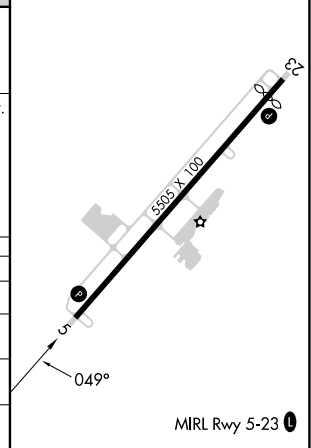
UNICOM  
**123.05 (CTAF) ①**



ELEV 26	<b>D</b> TDZE 24
---------	------------------



CATEGORY	A	B	C	D
LPV DA	274-1	250 (300-1)		NA
LNAV/VNAV DA	460-1 1/2	436 (500-1 1/2)		NA
LNAV MDA	460-1	436 (500-1)	460-1 1/4 436 (500-1 1/4)	NA
CIRCLING	480-1 454 (500-1)	520-1 494 (500-1)	720-2 694 (700-2)	NA



# RNAV (GPS) RWY 5

SE-2, 31 OCT 2024 to 28 NOV 2024

SE-2, 31 OCT 2024 to 28 NOV 2024