

WAAS CH <b>72614</b> <b>W05A</b>	APP CRS <b>055°</b>	Rwy Idg <b>5080</b> TDZE <b>360</b> Apt Elev <b>361</b>
--	------------------------	---

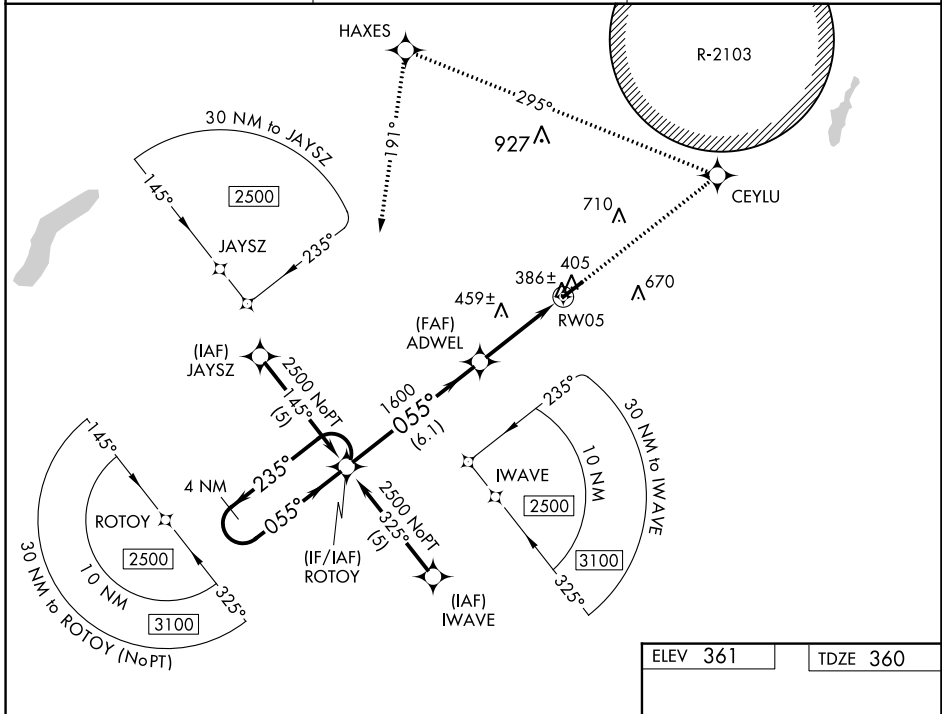
# RNAV (GPS) RWY 5

ENTERPRISE MUNI (EDN)

**▼** Baro-VNAV NA. For uncompensated Baro-VNAV systems, LNAV/VNAV NA below -15°C (5°F) or above 54°C (130°F). DME/DME RNP-0.3 NA.  
**▲** NA Use Cairns AAF (Fort Novosel) altimeter setting.

**MISSED APPROACH:** Climb to 2500 direct CEYLU and left turn via track 295° to HAXES and left turn via track 191° to ROTOY and hold.

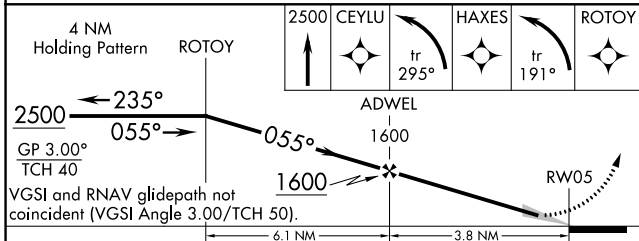
AWOS-3PT <b>118.9</b>	CAIRNS APP CON★ <b>133.45 239.275</b>	UNICOM <b>122.8(CTAF) 0</b>
--------------------------	--	--------------------------------



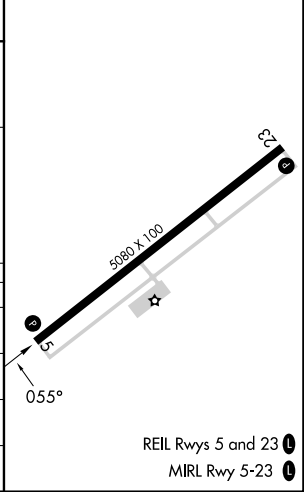
SE-4, 31 OCT 2024 to 28 NOV 2024

SE-4, 31 OCT 2024 to 28 NOV 2024

ELEV 361	TDZE 360
----------	----------



CATEGORY	A	B	C	D
LPV DA	642-1 282 (300-1)			NA
LNAV/VNAV DA	688-1¼ 328 (400-1¼)			NA
LNAV MDA	760-1 400 (400-1)			NA
CIRCLING	920-1 559 (600-1)		1100-2 739 (800-2)	NA



REIL Rwys 5 and 23 **0**  
MIRL Rwy 5-23 **0**