

LOC/DME I-AXH 108.9 Chan 26	APP CRS 089°	Rwy Idg 5002 TDZE 69 Apt Elev 69
---	------------------------	---

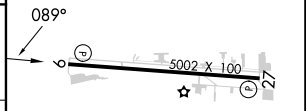
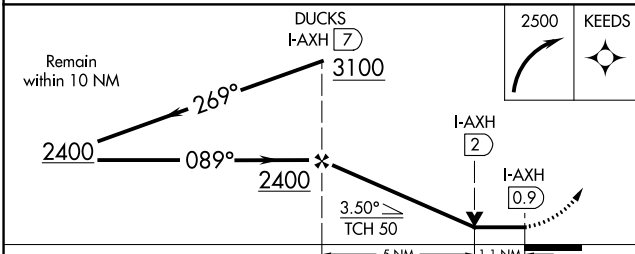
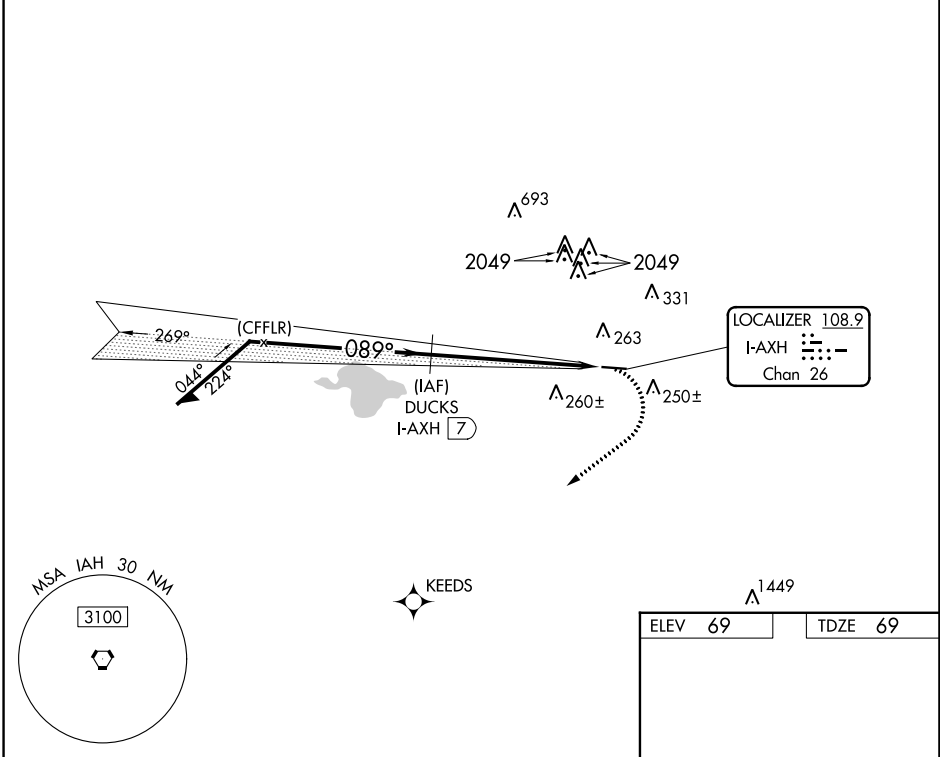
LOC RWY 9

HOUSTON/SOUTHWEST (AXH)

RNAV 1-GPS.
 ▼
 ▲ NA Rwy 9 helicopter visibility reduction below ¾ SM NA.

MISSED APPROACH: Climbing right turn to 2500 direct KEEDS.

AWOS-3 123.625	HOUSTON APP CON 123.8 257.7	CLNC DEL 120.8	UNICOM 123.0 (CTAF) 0
--------------------------	---------------------------------------	--------------------------	---------------------------------



CATEGORY	A	B	C	D
S-LOC 9	540-1	471 (500-1)	540-1 3/8 471 (500-1 3/8)	NA
CIRCLING	580-1	511 (600-1)	700-1 3/4 631 (700-1 3/4)	NA

REIL Rwys 9 and 27 0
 MIRL Rwy 9-27 0

SC-5, 31 OCT 2024 to 28 NOV 2024

SC-5, 31 OCT 2024 to 28 NOV 2024