

(LURIC8.LURIC) 21336

AL-6575 (FAA)

HOUSTON/SOUTHWEST (A.XH)

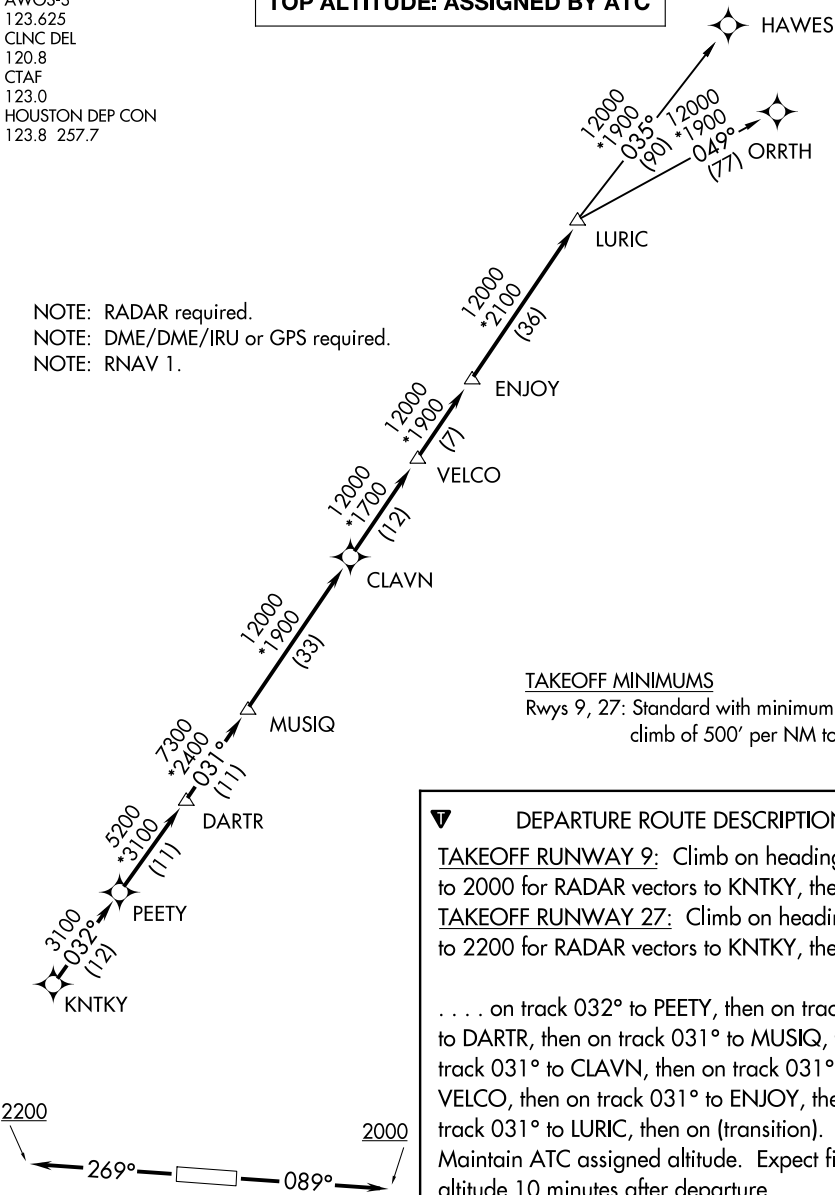
LURIC EIGHT DEPARTURE (RNAV)

HOUSTON, TEXAS

AWOS-3
123.625
CLNC DEL
120.8
CTAF
123.0
HOUSTON DEP CON
123.8 257.7

TOP ALTITUDE: ASSIGNED BY ATC

NOTE: RADAR required.
NOTE: DME/DME/IRU or GPS required.
NOTE: RNAV 1.



TAKEOFF MINIMUMS

Rwys 9, 27: Standard with minimum climb of 500' per NM to 580.

DEPARTURE ROUTE DESCRIPTION

TAKEOFF RUNWAY 9: Climb on heading 089° to 2000 for RADAR vectors to KNTKY, then . . .

TAKEOFF RUNWAY 27: Climb on heading 269° to 2200 for RADAR vectors to KNTKY, then . . .

. . . on track 032° to PEETY, then on track 032° to DARTR, then on track 031° to MUSIQ, then on track 031° to CLAVN, then on track 031° to VELCO, then on track 031° to ENJOY, then on track 031° to LURIC, then on (transition). Maintain ATC assigned altitude. Expect filed altitude 10 minutes after departure.

HAWES TRANSITION (LURIC8.HAWES)

ORRTH TRANSITION (LURIC8.ORRTH)

NOTE: Chart not to scale.

LURIC EIGHT DEPARTURE (RNAV)

(LURIC8.LURIC) 07OCT21

HOUSTON, TEXAS

HOUSTON/SOUTHWEST (A.XH)

SC-5, 31 OCT 2024 to 28 NOV 2024

SC-5, 31 OCT 2024 to 28 NOV 2024