

WAAS CH 81903 W27A	APP CRS 269°	Rwy Idg 5002 TDZE 67 Apt Elev 68
--	------------------------	---

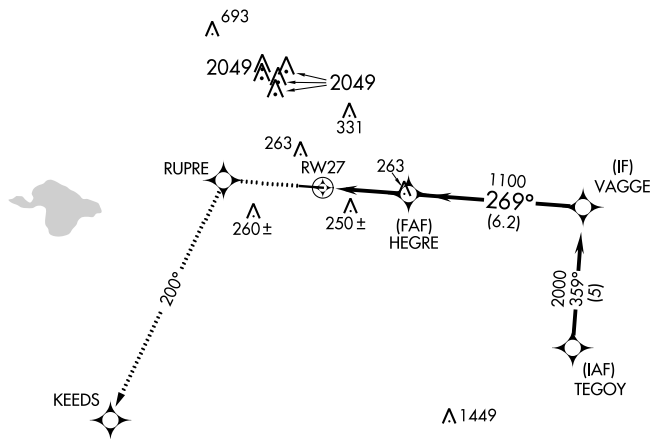
RNAV (GPS) RWY 27

HOUSTON/SOUTHWEST (A.XH)

RNP APCH.	<p>⚠ For uncompensated Baro-VNAV systems, LNAV/VNAV NA below -1.5°C (5°F) or above 54°C (130°F). Rwy 27 helicopter visibility reduction below 3/4 SM NA. Obtain local altimeter setting on CTAF; when not received use William P. Hobby altimeter setting and increase all DAs/MDA's 40 feet, and LPV, LNAV Cat C visibility 1/4 mile. Baro-VNAV NA when using William P. Hobby altimeter setting.</p>	<p>MISSED APPROACH: Climb to 2700 direct RUPRE and via 200° track to KEEDS.</p>
-----------	---	---

AWOS-3 123.625	HOUSTON APP CON 123.8 257.7	CLNC DEL 120.8	UNICOM 123.0 (CTAF) 0
--------------------------	---------------------------------------	--------------------------	---------------------------------

RADAR REQUIRED



ELEV 68	TDZE 67
---------	---------

	2700	RUPRE	tr 200°	KEEDS	VAGGE
					2000
		HEGRE		GP 3.00° TCH 45	
		RWY 27		1100	
		3.1 NM		6.2 NM	
CATEGORY	A	B	C	D	
LPV DA		367-1 300 (300-1)		NA	
LNAV/VNAV DA		604-2 537 (600-2)		NA	
LNAV MDA	560-1	493 (500-1)	560-1 1/4 493 (500-1 1/4)	NA	

REIL Rwy 9 and 27 **0**
MIRL Rwy 9-27 **0**