

(STYCK8.STYCK) 21336

AL-6575 (FAA)

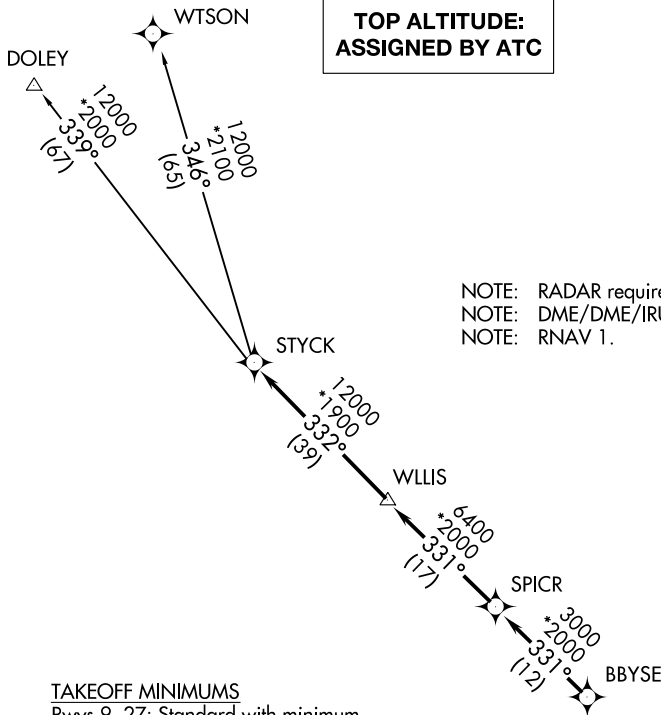
HOUSTON/SOUTHWEST (AXH)

STYCK EIGHT DEPARTURE (RNAV)

HOUSTON, TEXAS

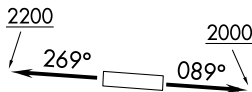
**TOP ALTITUDE:
ASSIGNED BY ATC**

AWOS-3
123.625
CLNC DEL
120.8
CTAF
123.0
HOUSTON DEP CON
123.8 257.7



NOTE: RADAR required.
NOTE: DME/DME/IRU or GPS required.
NOTE: RNAV 1.

TAKEOFF MINIMUMS
Rwys 9, 27: Standard with minimum
climb of 500' per NM to 580.



NOTE: Chart not to scale.

DEPARTURE ROUTE DESCRIPTION

TAKEOFF RUNWAY 9: Climb on heading 089° to 2000 for RADAR vectors to BBYSE, thence. . .

TAKEOFF RUNWAY 27: Climb on heading 269° to 2200 for RADAR vectors to BBYSE, thence. . .

. . . on track 331° to SPICR, then on track 331° to WLLIS, then on track 332° to STYCK, then on (transition). Maintain ATC assigned altitude. Expect filed altitude 10 minutes after departure.

DOLEY TRANSITION (STYCK8.DOLEY)

WTSON TRANSITION (STYCK8.WTSON)

STYCK EIGHT DEPARTURE (RNAV)

(STYCK8.STYCK) 07OCT21

HOUSTON, TEXAS

HOUSTON/SOUTHWEST (AXH)

SC-5, 31 OCT 2024 to 28 NOV 2024

SC-5, 31 OCT 2024 to 28 NOV 2024