

APP CRS	Rwy Idg	<b>4001</b>
<b>178°</b>	TDZE	<b>1214</b>
	Apt Elev	<b>1226</b>

# RNAV (GPS) RWY 18

CHEROKEE COUNTY RGNL (CKP)

RNP APCH.

**▼** Circling NA to Rwys 1 and 19. Rwy 18 helicopter visibility reduction below 1 SM NA. Rwy 18 Straight-in and Circling NA at night.

**▲**

MISSED APPROACH: Climb to 3000 direct YACYU and hold.

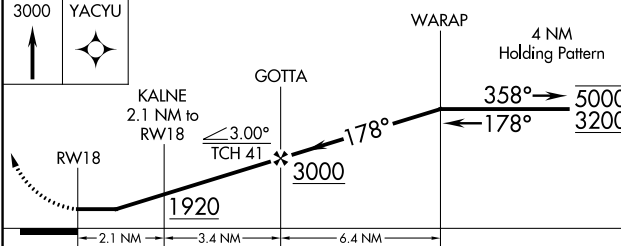
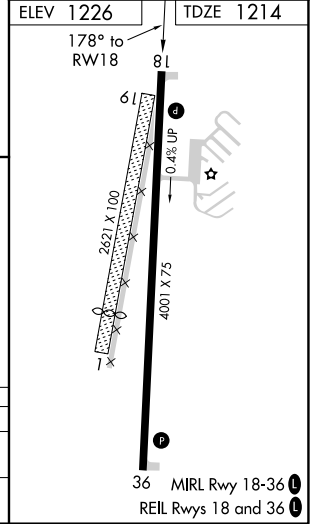
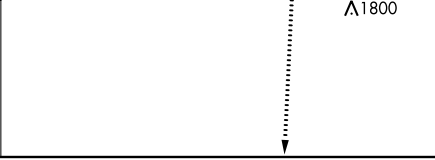
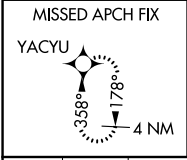
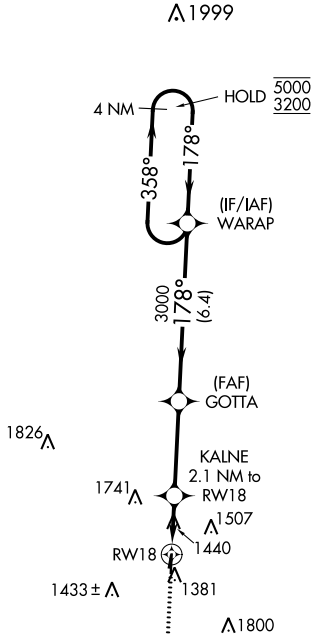
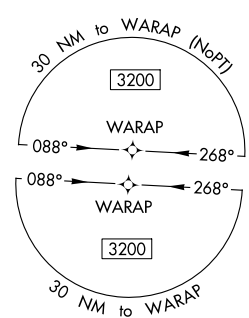
AWOS-3  
**119.225**

MINNEAPOLIS CENTER  
**125.025 235.625**

UNICOM  
**122.8 (CTAF) 0**

NC-3, 31 OCT 2024 to 28 NOV 2024

NC-3, 31 OCT 2024 to 28 NOV 2024



CATEGORY	A	B	C	D
LNVA MDA	1740-1	526 (600-1)	1740-1½	526 (600-1½)
<b>C</b> CIRCLING	1760-1 534 (600-1)	1820-1 594 (600-1)	2100-2½ 874 (900-2½)	2160-3 934 (1000-3)