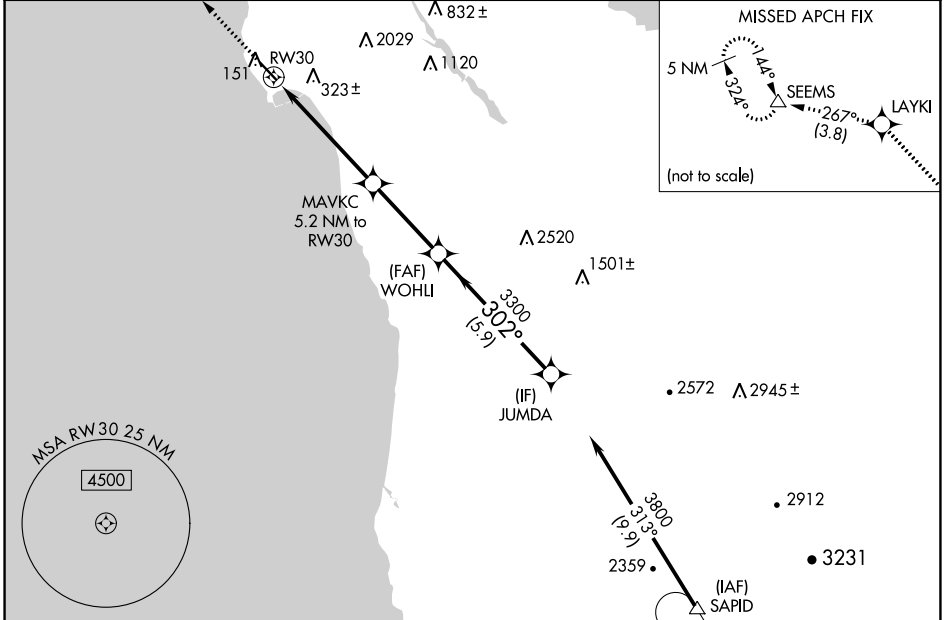


WAAS CH 50302 W30A	APP CRS 302°	Rwy Idg TDZE Apt Elev	4238 54 66
--	------------------------	-----------------------------	---------------------------------------

RNAV (GPS) RWY 30

HALF MOON BAY (HAF')

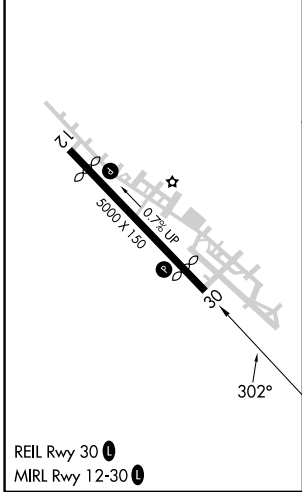
RNP APCH. ▽	MISSED APPROACH: Climb to 4000 direct LAYKI and on track 267° to SEEMS and hold, continue climb-in-hold to 4000.	
AWOS-3 127.275	NORCAL APP CON 135.1 307.2	UNICOM 122.8 (CTAF) 0



SW-2, 31 OCT 2024 to 28 NOV 2024

SW-2, 31 OCT 2024 to 28 NOV 2024

ELEV 66	TDZE 54
---------	---------



4000	LAYKI	tr 267°	SEEMS	VGSi and RNAV glidepath not coincident (VGSi Angle 3.00/TCH 24).			
*LNAV only		MAVKC 5.2 NM to RWY 30		JUMDA			
RWY 30		1.8 NM to RWY 30		WOHLI	3300		3800
1.8 NM		3.4 NM		3.4 NM		5.9 NM	
CATEGORY	A		B		C		D
LPV DA	381-1 327 (400-1)						
LNAV MDA	620-1 566 (600-1)		620-1½ 566 (600-1½)				